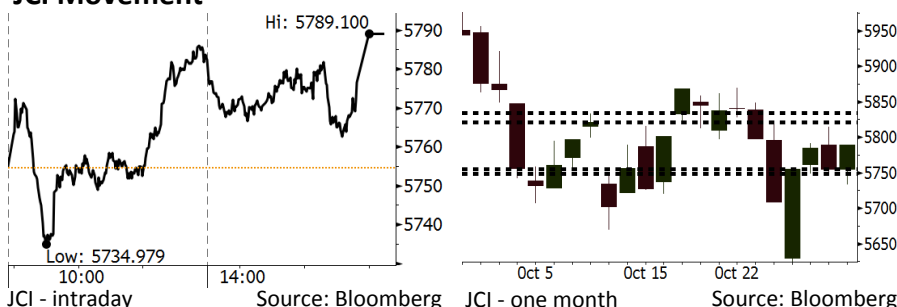


Morning Brief

Daily | Oct 31, 2018

JCI Movement



IHSG (Jakarta Composite Index)

October 30	5,789.10
Chg	+34.49pts (+0.60%)
Volume (bn shares)	105.46
Value (IDR tn)	7.41
Adv 142 Dec 239 Unc 245 Untr 131	

Foreign Transaction (IDR bn)	
Buy	3,153
Sell	2,553
Net Buy (Sell)	599

Top Buy	NB Val.	Top Sell	NS Val.
TLKM	293.4	PGAS	49.0
ASII	125.1	ICBP	20.6
BBCA	85.2	ADRO	20.4
BBRI	47.4	ITMG	19.3
BMRI	30.9	ANTM	17.9

LQ-45 Index		Top Gainers & Losers	
Gainers	%	Losers	%
INKP	6.4%	ANTM	-4.3%
BRPT	5.1%	INDY	-3.6%
TLKM	3.8%	MEDC	-3.1%
SRIL	2.8%	LPPF	-3.0%
BBRI	2.7%	AKRA	-2.6%

Government Bond Yield & FX		
	Last	Chg.
Tenor: 10 year	8.63%	-0.01%
USDIDR	15,224	0.01%
KRWIDR	13.38	0.41%

Global Indexes			
Index	Last	Chg.	%
Dow Jones	24,874.64	431.72	1.77%
S&P 500	2,682.63	41.38	1.57%
Nasdaq	7,161.65	111.36	1.58%
FTSE 100	7,035.85	9.53	0.14%
CAC 40	4,978.53	(10.82)	-0.22%
DAX	11,287.39	(48.09)	-0.42%
Nikkei	21,457.29	307.49	1.45%
Hang Seng	24,585.53	(226.51)	-0.91%
Shanghai	2,568.05	25.95	1.02%
KOSPI	2,014.69	18.64	0.93%
EIDO	21.96	0.72	3.39%

Commodities			
Commodity	Last	Chg.	%
Gold (USD /troy oz.)	1,222.9	(6.5)	-0.53%
Crude Oil (USD /bbl)	66.18	(0.86)	-1.28%
Coal Newcas(USD/ton)	107.35	(1.00)	-0.92%
Gas (USD /mmbtu)	3.19	(0.01)	-0.34%
Nickel LME (USD /MT)	11,765	10.0	0.09%
Tin LME (USD /MT)	19,075	(50.0)	-0.26%
CPO (MYR/Ton)	2,169	(18.0)	-0.82%

Market Recap

Meski sempat bergerak melemah, IHSG ditutup naik kemarin, ditopang oleh pergerakan sektor keuangan dan kelanjutan aksi *net buy* investor asing. **Top Gainers: Misc. Industry (+1.97%), Finance (+1.55%), Basic Industry (+1.38%)**

Sebagian besar bursa global ditutup menguat kemarin, setelah mengalami penurunan pada penutupan sebelumnya. Investor global masih mencermati rilis kinerja keuangan 3Q18 serta perkembangan perang dagang antara AS-Tiongkok. Di sisi lain, bursa Tiongkok juga menguat, ditopang oleh rencana pemerintah untuk meningkatkan investasi di pasar sahamnya.

Today's Outlook: Masih Fokus pada Rilis Laba 3Q18

Untuk hari ini kami mengestimasi IHSG bergerak menguat dengan **support range 5749-5755** dan **resistance range 5821-5834**. Sentimen positif datang dari rilis laba bersih 3Q18 dari berbagai perusahaan. Kemarin harga saham ASII menunjukkan *rally* yang signifikan setelah laba 3Q18 menunjukkan penguatan. Kami memperkirakan bahwa posisi *net buy* asing yang masif cukup besar merupakan indikasi terhadap ekspektasi investor bahwa kinerja perusahaan pada 3Q18 sangat baik.

Di sisi lain, tantangan datang dari global. Pagi ini Tiongkok merilis indeks manufaktur Oktober yang tercatat sebesar 50,2. Angka ini turun tajam dibandingkan dengan angka pada September sebesar 50,8. Penurunan aktifitas manufaktur Tiongkok merupakan imbas dari tensi perang dagang AS-Tiongkok.

Stocks Recommendation (details on the next page)

Trading Buy: AALI, ICBP, KLBF

Company News

- WIKA : Laba Bersih Tercatat Naik 26,1%
- HOKI : Pertumbuhan Laba Bersih 95%
- SGRO : Terdampak Pelemahan Harga CPO
- PRDA : Mencatatkan Pendapatan Rp1,12 Triliun

Domestic & Global News

- Realisasi Investasi 3Q18 Turun 1,6%
- Pertumbuhan PMI Tiongkok Merosot

Indonesia Economic Data

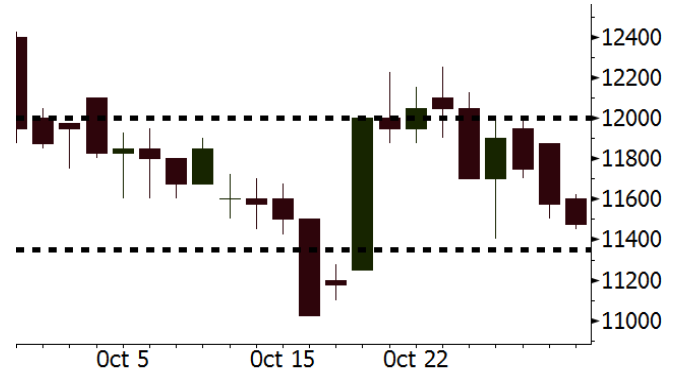
Monthly Indicator	Last	Prev.	Quarterly Indicator	Last	Prev.
BI 7 Day Rev Repo Rate	5.75%	5.75%	Real GDP	5.27%	5.06%
FX Reserve (USD bn)	114.85	117.90	Current Acc (USD bn)	(8.03)	(5.54)
Trd Balance (USD bn)	0.23	(1.02)	Govt. Spending Yoy	5.26%	2.73%
Exports Yoy	1.70%	4.15%	FDI (USD bn)	5.50	3.49
Imports Yoy	14.18%	24.65%	Business Confidence	112.82	106.28
Inflation Yoy	2.88%	3.20%	Cons. Confidence*	122.40	121.60

AALI Last = 11475

Analysis AALI mendapatkan sentimen positif dari rencana pemerintah yang akan memberikan insentif pajak bagi produsen *biofuel*. Aturan ini akan memacu permintaan yang lebih besar terhadap sektor CPO.

Range 11350 – 12000

Action Trading Buy. Cut Loss If Below 11350



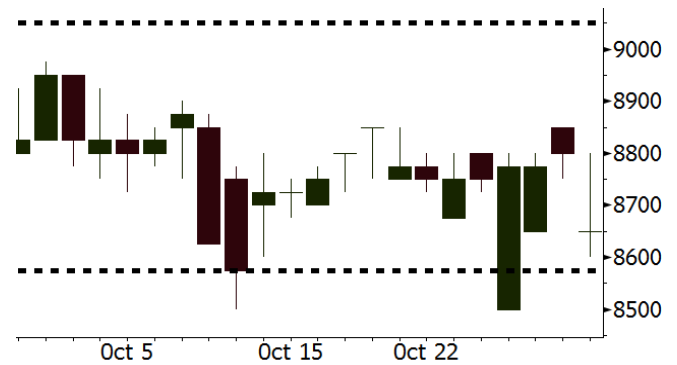
Source: Bloomberg

ICBP Last = 8650

Analysis ICBP mencetak laba bersih sebesar Rp1,2 triliun pada 3Q18. Angka ini melonjak 25% y-y dari Rp950 miliar pada 3Q17.

Range 8575 – 9050

Action Trading Buy. Cut Loss If Below 8575



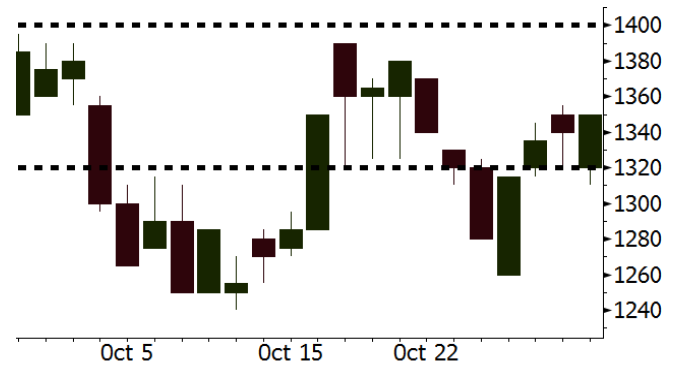
Source: Bloomberg

KLBF Last = 1350

Analysis KLBF mencetak laba bersih sebesar Rp584 miliar pada 3Q18 atau tumbuh 3,7% y-y dari Rp563 miliar pada 3Q17. Sebagai perbandingan, pada 2Q18 KLBF mencatatkan penurunan laba bersih sebesar 0,3%.

Range 1320 – 1400

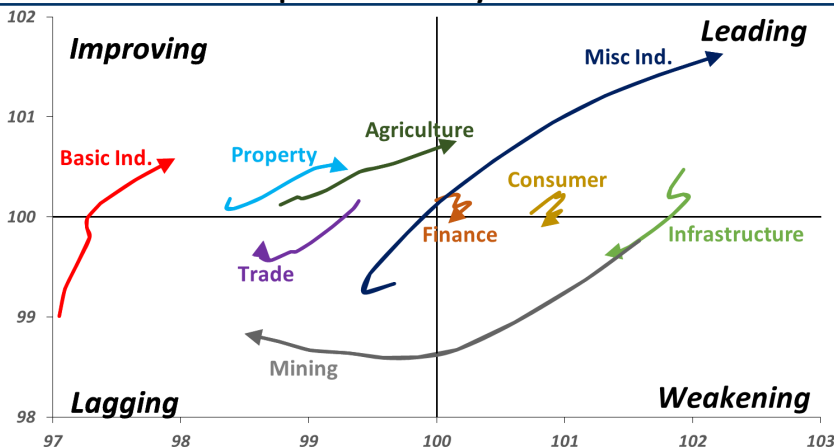
Action Trading buy. Cut Loss If Below 1320



Source: Bloomberg

Sector Rotation

Relative Rotation Graph - Last 10 Days



Source: Bloomberg

Relative Valuation

	Last Price	End of Last Year Price	Target Price*	Rating	Upside Potential (%)	1 Year Change (%)	Market Cap (IDR tn)	Price / EPS (TTM)	Price / BVPS	Return on Equity (%)	Dividend Yield TTM (%)	Sales Growth Yoy (%)	EPS Growth Yoy (%)	Adjusted Beta
JCI Index	5,789	6,356				(3.6)	6,565.9							
Finance						1.8	1,968.6							
BBCA	23,500	21,900	27,650	Buy	17.7	12.4	579.4	23.2x	4.0x	18.4	1.1	7.5	10.0	1.0
BBRI	3,030	3,640	3,930	Buy	29.7	(2.9)	373.7	11.6x	2.1x	19.3	3.5	7.9	14.5	1.4
BMRI	6,525	8,000	7,500	Hold	14.9	(7.4)	304.5	12.9x	1.8x	14.2	3.1	2.7	20.1	1.3
BBNI	7,175	9,900	9,675	Buy	34.8	(5.6)	133.8	9.0x	1.3x	15.1	3.6	10.0	12.5	1.4
BBTN	2,100	3,570	3,280	Buy	56.2	(23.9)	22.2	6.8x	1.0x	14.9	2.7	14.5	11.6	1.7
BJTM	610	710	810	Buy	32.8	(12.2)	9.1	7.7x	1.2x	15.5	7.2	1.1	2.5	0.8
Consumer						(4.1)	1,382.8							
HMSP	3,870	4,730	4,300	Hold	11.1	(2.8)	450.2	34.6x	14.3x	41.8	2.8	7.2	3.8	1.3
GGRM	72,400	83,800	88,650	Buy	22.4	3.4	139.3	17.0x	3.4x	20.9	3.6	12.6	13.7	1.3
UNVR	44,500	55,900	49,600	Hold	11.5	(10.3)	339.5	37.4x	37.9x	118.0	2.1	1.0	39.7	1.1
ICBP	8,650	8,900	10,550	Buy	22.0	(1.7)	100.9	25.2x	5.1x	21.3	1.9	5.4	9.5	1.0
INDF	5,700	7,625	8,175	Buy	43.4	(30.5)	50.0	13.0x	1.6x	12.6	4.2	1.0	(12.5)	1.2
KLBF	1,350	1,690	1,730	Buy	28.1	(15.6)	63.3	26.1x	4.5x	18.3	1.9	3.9	1.4	1.3
KAEF	2,500	2,700	2,890	Buy	15.6	(9.7)	13.9	39.3x	5.5x	14.9	0.7	29.1	28.3	1.1
Infrastructure						(8.5)	711.73							
TLKM	3,800	4,399	4,700	Buy	23.7	(4.8)	376.4	20.4x	4.2x	20.4	4.4	2.3	(20.6)	0.8
EXCL	2,630	2,960	3,930	Buy	49.4	(22.2)	28.1	193.0x	1.3x	0.7	N/A	1.0	N/A	1.2
ISAT	2,440	4,800	6,750	Buy	176.6	(59.3)	13.3	N/A	1.0x	(2.6)	3.0	(26.8)	N/A	0.9
PGAS	2,130	1,750	2,600	Buy	22.1	15.8	51.6	14.2x	1.1x	7.6	1.5	15.0	200.0	1.4
JSMR	4,150	6,400	6,050	Buy	45.8	(36.2)	30.1	14.6x	1.9x	13.4	1.5	18.7	(6.9)	0.9
TBIG	4,670	6,425	6,050	Buy	29.6	(31.3)	21.2	9.4x	7.0x	104.6	3.6	7.1	8.1	0.7
INDY	2,130	3,060	5,000	Buy	134.7	(5.3)	11.1	2.0x	0.8x	44.8	5.0	219.4	49.0	0.9
Trade						(15.8)	681.6							
UNTR	32,700	35,400	44,750	Buy	36.9	(5.7)	122.0	11.3x	2.3x	22.6	3.0	32.1	60.8	1.1
AKRA	3,430	6,350	4,650	Buy	35.6	(54.0)	13.8	18.5x	1.7x	19.3	6.4	25.3	(22.4)	1.2
SCMA	1,620	2,480	2,025	Buy	25.0	(24.7)	23.7	16.6x	5.2x	32.3	4.6	10.8	8.7	1.2
MNCN	810	1,285	1,125	Buy	38.9	(48.1)	11.6	8.1x	1.1x	14.6	1.9	1.8	(9.2)	1.1
LPPF	4,790	10,000	9,270	Buy	93.5	(44.3)	14.0	7.4x	5.6x	85.6	9.6	3.1	(0.6)	1.1
ACES	1,370	1,155	1,635	Buy	19.3	9.2	23.5	26.6x	6.6x	26.3	1.7	22.6	30.0	1.1
RALS	1,180	1,200	1,525	Buy	29.2	29.0	8.4	15.1x	2.1x	14.6	3.4	0.9	31.8	0.9
MAPI	815	620	945	Buy	16.0	24.4	13.5	23.1x	3.0x	15.5	0.5	18.0	183.0	1.0
Property						(21.8)	343.6							
BSDE	1,080	1,700	1,850	Buy	71.3	(37.2)	20.8	6.2x	0.8x	13.8	N/A	(27.6)	(79.9)	1.4
PWON	462	685	625	Buy	35.3	(26.7)	22.2	10.0x	1.9x	20.6	1.3	19.0	25.2	1.2
CTRA	820	1,185	1,050	Buy	28.0	(32.2)	15.2	20.8x	1.1x	5.6	1.2	(0.8)	(49.0)	1.5
SMRA	590	945	670	Hold	13.6	(43.0)	8.5	21.7x	1.3x	6.1	0.8	(1.2)	29.6	1.5
WSKT	1,440	2,210	2,810	Buy	95.1	(32.1)	19.5	3.4x	1.2x	39.6	4.0	47.3	134.6	1.3
PTPP	1,340	2,640	3,850	Buy	187.3	(53.0)	8.3	6.1x	0.7x	12.5	3.5	17.0	(16.3)	1.3
WIKA	1,100	1,550	2,150	Buy	95.5	(44.2)	9.9	7.1x	0.7x	11.0	2.4	32.3	26.0	1.0
ADHI	1,105	1,885	2,160	Buy	95.5	(49.5)	3.9	6.1x	0.6x	11.1	2.6	8.2	63.6	1.1
Misc Ind.						(3.7)	385.9							
ASII	7,700	8,300	9,300	Buy	20.8	(3.8)	311.7	14.3x	2.4x	17.3	2.5	16.4	20.6	1.2
Basic Ind.						9.9	581.7							
INTP	16,600	21,950	21,575	Buy	30.0	(26.1)	61.1	46.5x	2.7x	5.7	4.2	(0.9)	(60.6)	1.4
SMGR	8,650	9,900	11,550	Buy	33.5	(20.6)	51.3	27.1x	1.8x	6.6	1.6	4.7	(10.9)	1.2
CPIN	5,450	3,000	6,700	Buy	22.9	65.2	89.4	26.2x	5.2x	21.3	1.0	2.7	59.1	1.0
JPFA	2,000	1,300	3,250	Buy	62.5	45.5	23.5	12.7x	2.6x	20.2	5.0	16.8	104.2	0.8
MAIN	1,260	740	1,930	Buy	53.2	43.2	2.8	19.6x	1.5x	7.9	1.3	13.5	350.0	1.2
KRAS	366	424	500	Buy	36.6	(25.6)	7.1	N/A	0.3x	(2.5)	N/A	22.7	51.3	1.1
TPIA	4,830	6,000	6,275	Buy	29.9	(15.0)	86.1	21.8x	3.3x	17.8	1.3	7.6	(37.4)	0.8
Mining						13.8	412.5							
ADRO	1,650	1,860	2,500	Buy	51.5	(9.6)	52.8	7.6x	1.0x	13.3	6.6	3.9	(12.1)	1.1
PTBA	4,190	2,460	5,375	Buy	28.3	82.6	48.3	8.2x	3.3x	42.8	7.6	17.0	54.0	1.0
ITMG	25,950	20,700	32,400	Buy	24.9	16.9	29.3	7.6x	2.1x	27.6	12.6	8.0	(10.0)	1.1
INCO	2,830	2,890	3,760	Buy	32.9	(3.7)	28.1	29.5x	1.0x	3.2	N/A	29.2	N/A	1.3
ANTM	675	625	1,200	Buy	77.8	4.7	16.2	16.6x	0.9x	5.3	0.3	292.4	N/A	1.2
TINS	640	775	1,240	Buy	93.8	(22.0)	4.8	9.0x	0.8x	8.8	3.7	1.8	13.1	1.1
MEDC	795	890	1,025	Buy	28.9	12.0	14.1	15.8x	0.7x	7.8	N/A	42.4	51.2	1.6
ELSA	360	372	625	Buy	73.6	16.9	2.6	6.9x	0.8x	12.4	1.4	39.7	157.9	1.3
Agriculture						(13.9)	97.6							
AALI	11,475	13,150	16,925	Buy	47.5	(21.3)	22.1	12.8x	1.2x	9.5	3.8	9.1	(18.2)	0.6
LSIP	1,250	1,420	1,500	Buy	20.0	(17.2)	8.5	16.1x	1.0x	6.6	3.6	(28.5)	(47.6)	0.7

* Target Price for December 2018

Source: Bloomberg, NHKS Research

WIKA : Laba Bersih Tercatat Naik 26,1%

PT Wijaya Karya (Persero) Tbk (WIKA) mencatatkan pertumbuhan dua digit pada pendapatan dan laba bersihnya. Pada 3Q18, pendapatan dan laba bersih WIKA tercatat masing-masing sebesar Rp21,00 triliun (+32,3% y-y) dan Rp860,45 miliar (+26,1% y-y). Pendapatan WIKA pada 3Q18 masih didominasi oleh proyek dari sektor infrastruktur dan gedung, disusul oleh sektor industri, energi dan industrial plant, dan properti. (Bisnis Indonesia)

SGRO : Terdampak Pelemahan Harga CPO

PT Samporena Agro Tbk (SGRO) mencatatkan penurunan penjualan dan laba bersih, yang masing-masing menjadi sebesar Rp2,28 triliun (-10% y-y) dan Rp168,84 miliar (-17% y-y) pada 3Q18. Padahal beban pokok pendapatan SGRO juga tercatat turun sebesar 8% y-y. Penurunan kinerja secara keseluruhan ini disebabkan oleh tren penurunan harga CPO, yang diproyeksikan akan terus berlanjut hingga akhir tahun ini. (Kontan)

HOKI : Pertumbuhan Laba Bersih 95%

PT Buyung Poetra Sembada Tbk (HOKI) mencatatkan pertumbuhan laba bersih menjadi sebesar Rp70,08 miliar (+95% y-y) pada 3Q18. Pertumbuhan ini didorong oleh naiknya pendapatan HOKI pada 3Q18 yang tercatat sebesar Rp1,06 triliun (+18% y-y). Pendapatan HOKI dikontribusikan oleh segmen penjualan beras sebesar Rp1,09 triliun dan segmen retur dan potongan penjualan sebesar Rp28,05 miliar. (Kontan)

PRDA : Mencatatkan Pendapatan Rp1,12 Triliun

PT Prodia Widyahusada Tbk (PRDA) mencatatkan pendapatan bersih sebesar Rp1,12 triliun (+7,2% y-y) pada 3Q18. PRDA menyatakan bahwa kinerja ini terbilang solid, mengingat kondisi pasar yang cukup berat. Pendapatan PRDA dikontribusikan oleh segmen pelanggan individu sebesar 33,0%, rujukan dokter sebesar 31,4%, referensi pihak ketiga sebesar 20,6% dan klien korporasi sebesar 15,0%. (Bisnis Indonesia)

Domestic & Global News

Realisasi Investasi 3Q18 Turun 1,6%

Badan Koordinasi Penanaman Modal (BKPM) mencatat realisasi investasi pada 3Q18 mencapai Rp173,8 triliun, turun 1,6% dibandingkan 3Q17 yang sebesar Rp176,6 triliun. Dari realisasi investasi di 3Q18, BKPM mencatat *Foreign Direct Investment* (FDI) sebesar Rp89,1 triliun turun 20% dari 3Q17 dan *Domestic Direct Investment* (DDI) sebesar Rp84,7 triliun atau naik 30,5% dibandingkan 3Q17. (Kontan)

Pertumbuhan PMI Tiongkok Merosot

Pertumbuhan manufaktur Tiongkok merosot pada Oktober, dipicu oleh perseteruan dagang dengan AS. PMI Tiongkok tercatat sebesar 50,2, lebih rendah dibandingkan angka prakiraan sebesar 50,6. Sementara itu, PMI Tiongkok bertengger di angka 50,8 pada September. Tarif pajak AS yang mulai berlaku pada Oktober berujung pada kemerosotan pertumbuhan PMI Tiongkok. Baku hantam pajak barang impor oleh AS dan Tiongkok tetap berkecamuk hingga 24 September 2018. (CNBC)

Global Economic Calendar

Date	Country	Hour Jakarta	Event	Period	Actual	Consensus	Previous
Monday	USA	19:30	Personal Income	Sep	0.20%	0.40%	0.30%
29 - Oct	USA	19:30	Personal Spending	Sep	0.40%	0.40%	0.30%
Tuesday	JPN	06:30	Jobless Rate	Sep	2.30%	2.40%	2.40%
30 - Oct	GER	15:55	Unemployment Change (000's)	Oct	-11k	-13k	-23k
	EU	17:00	GDP SA QoQ	3Q A	0.20%	0.40%	0.40%
	EU	17:00	GDP SA YoY	3Q A	1.70%	1.80%	2.10%
	EU	17:00	Consumer Confidence	Oct F	-2.7	-2.7	-2.7
	GER	20:00	CPI MoM	Oct P	0.20%	0.10%	0.40%
	GER	20:00	CPI YoY	Oct P	2.50%	2.40%	2.30%
Wednesday	JPN	06:50	Industrial Production MoM	Sep P	-1.10%	-0.30%	0.20%
31 - Oct	CHN	08:00	Manufacturing PMI	Oct	50.2	50.6	50.8
	USA	19:15	ADP Employment Change	Oct		190k	230k
Thursday	JPN	07:30	Nikkei Japan PMI Mfg	Oct F		--	53.1
01 - Nov	CHN	08:45	Caixin China PMI Mfg	Oct		50	50
	UK	16:30	Markit UK PMI Manufacturing SA	Oct		53	53.8
	UK	19:00	Bank of England Bank Rate	1-Nov		0.75%	0.75%
	USA	19:30	Initial Jobless Claims	27-Oct		--	215k
	USA	21:00	ISM Manufacturing	Oct		59.4	59.8
Friday	GER	15:55	Markit Germany Manufacturing PMI	Oct F		--	52.3
02 - Nov	EU	16:00	Markit Eurozone Manufacturing PMI	Oct F		--	52.1
	USA	19:30	Change in Nonfarm Payrolls	Oct		190k	134k
	USA	19:30	Unemployment Rate	Oct		3.70%	3.70%
	USA	19:30	Underemployment Rate	Oct		--	7.50%
	USA	21:00	Factory Orders	Sep		0.30%	2.30%
	USA	21:00	Durable Goods Orders	Sep F		--	0.80%

Source: Bloomberg

Domestic Economic Calendar

Date	Hour Jakarta	Event	Period	Actual	Consensus	Prev.
Wednesday	Tentative	Money Supply M2 YoY	Sep		--	5.90%
31 - Oct	Tentative	Money Supply M1 YoY	Sep		--	8.60%
Thursday	07:30	Nikkei Indonesia PMI Mfg	Oct		--	50.7
01 - Nov	11:00	CPI YoY	Oct		--	2.88%
	11:00	CPI NSA MoM	Oct		--	-0.18%
	11:00	CPI Core YoY	Oct		--	2.82%

Source: Bloomberg

Corporate Calendar

Date	Event	Company
Monday	Extraordinary Shareholder Meeting	BBKP, MKNT
29 - Oct	IPO Listing Date	YELO
Tuesday	Extraordinary Shareholder Meeting	ABDA
30 - Oct	Cum Dividend Date	ITMG (IDR1,420 per share)
Wednesday	Annual Shareholder Meeting	CMNP
31 - Oct	IPO Listing Date	CAKK

Source: Bloomberg

DISCLAIMER

This report and any electronic access hereto are restricted and intended only for the clients and related entities of PT NH Korindo Sekuritas Indonesia. This report is only for information and recipient use. It is not reproduced, copied, or made available for others. Under no circumstances is it considered as a selling offer or solicitation of securities buying. Any recommendation contained herein may not be suitable for all investors. Although the information hereof is obtained from reliable sources, its accuracy and completeness cannot be guaranteed. PT NH Korindo Sekuritas Indonesia, its affiliated companies, employees, and agents are held harmless from any responsibility and liability for claims, proceedings, action, losses, expenses, damages, or costs filed against or suffered by any person as a result of acting pursuant to the contents hereof. Neither is PT NH Korindo Sekuritas Indonesia, its affiliated companies, employees, nor agents are liable for errors, omissions, misstatements, negligence, inaccuracy contained herein.

All rights reserved by PT NH Korindo Sekuritas Indonesia



PT. NH Korindo Sekuritas Indonesia

Member of Indonesia Stock Exchange

Head Office :

Wisma Korindo 7th Floor
Jl. M.T. Haryono Kav. 62
Pancoran, Jakarta 12780
Indonesia
Telp: +62 21 7976202
Fax : +62 21 7976206

Branch Office BSD:

ITC BSD Blok R No.48
Jl. Pahlawan Seribu Serpong
Tangerang Selatan 15322
Indonesia
Telp : +62 21 5316 2049
Fax : +62 21 5316 1687

Branch Office Solo :

Jl. Ronggowarsito No. 8
Kota Surakarta
Jawa Tengah 57111
Indonesia
Telp: +62 271 664763
Fax : +62 271 661623

A Member of NH Investment & Securities Global Network

Seoul | New York | Hong Kong | Singapore | Shanghai | Beijing | Hanoi |
Jakarta