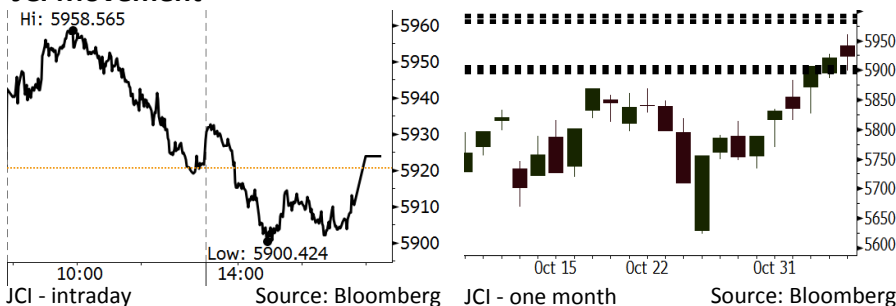


Morning Brief

Daily | Nov 7, 2018

JCI Movement



IHSG (Jakarta Composite Index)

November 6	5,923.93
Chg	+3.34pts (+0.06%)
Volume (bn shares)	77.28
Value (IDR tn)	7.53
Adv 192 Dec 181 Unc 256 Untr 123	

Foreign Transaction (IDR bn)	
Buy	2,964
Sell	1,904
Net Buy (Sell)	1,060

Top Buy	NB Val.	Top Sell	NS Val.
BBCA	314.0	ERAA	49.0
BBRI	90.5	BBNI	29.3
ASII	87.0	BSDE	13.1
GGRM	74.9	SSMS	7.3
BMRI	54.3	INDF	7.2

LQ-45 Index Top Gainers & Losers			
Gainers	%	Losers	%
INDY	6.4%	HMSF	-3.3%
EXCL	6.2%	INDF	-2.5%
BSDE	3.6%	AKRA	-2.0%
ADRO	3.5%	BRPT	-1.9%
BKSL	3.2%	LPPF	-1.9%

Government Bond Yield & FX			
	Last	Chg.	
Tenor: 10 year	8.18%	-0.16%	
USDIDR	14,804	-1.16%	
KRWIDR	13.18	-1.13%	

Global Indexes			
Index	Last	Chg.	%
Dow Jones	25,635.01	173.31	0.68%
S&P 500	2,755.45	17.14	0.63%
Nasdaq	7,375.96	47.11	0.64%
FTSE 100	7,040.68	(63.16)	-0.89%
CAC 40	5,075.19	(26.20)	-0.51%
DAX	11,484.34	(10.62)	-0.09%
Nikkei	22,147.75	248.76	1.14%
Hang Seng	26,120.96	186.57	0.72%
Shanghai	2,659.36	(6.08)	-0.23%
KOSPI	2,089.62	12.70	0.61%
EIDO	23.37	0.20	0.86%

Commodities			
Commodity	Last	Chg.	%
Gold (USD /troy oz.)	1,227.2	(4.3)	-0.35%
Crude Oil (USD /bbl)	62.21	(0.89)	-1.41%
Coal Newcas(USD/ton)	103.75	0.05	0.05%
Gas (USD /mmbtu)	3.56	(0.01)	-0.34%
Nickel LME (USD /MT)	11,775	25.0	0.21%
Tin LME (USD /MT)	19,050	(25.0)	-0.13%
CPO (MYR/Ton)	2,122	(31.0)	-1.44%

Market Recap

IHSG bergerak melemah kemarin terkait rilis data Indeks Keyakinan Konsumen dan penjualan eceran. Namun di tengah penguatan rupiah, IHSG mampu ditutup flat. **Top Gainers: Mining (+1.07%), Property (+0.96%), Finance (+0.75%)**

Bursa global bergerak variatif kemarin, seiring investor menunggu hasil pemilu *midterm* AS. Pasar AS bergerak naik dengan ekspektasi pemilu ini dimenangkan oleh partai Demokrat. Di sisi lain, bursa Eropa ditutup turun di tengah ketidakpastian politik terkait prospek Brexit dan konflik Uni Eropa-Italia. Pasar Asia bergerak variatif dengan penurunan bursa Tiongkok.

Today's Outlook: Cadangan Devisa Oktober

Untuk hari ini kami mengestimasi IHSG bergerak menguat dengan **support range 5897-5906** dan **resistance range 5982-5992**. Pada hari ini pasar akan mencerna rilis cadangan devisa Oktober. Pada September cadangan devisa masih mengalami penurunan ke posisi US\$114,9 miliar. Pada Oktober cadangan devisa sangat berpeluang untuk mengalami *rebound*. Hal ini diindikasikan oleh pergerakan rupiah yang tidak mengalami tekanan sepanjang Oktober. Bahkan kini rupiah telah mampu stabil di bawah posisi 15.000 per dolar.

Dari global, sentimen positif datang dari berlanjutnya tren penurunan harga minyak global. Kemarin harga minyak WTI turun 1,41% dipicu dispensasi yang diberikan oleh AS terhadap 8 negara pengimpor minyak Iran. Tren penurunan harga minyak akan memicu pemulihan rupiah.

Stocks Recommendation (details on the next page)

Trading Buy: TLKM, KLBF, JPFA

Company News

- ADRO : Produksi AMC Ditargetkan 1 Juta Ton
- INDY : Proyeksi Produksi Premium 1,3 Juta Ton
- GMFI : Membidik Porsi Pendapatan Internasional 50%
- HEXA : Penjualan 2018 Dapat Tumbuh 33,9%

Domestic & Global News

Penjualan Eceran Oktober Diperkirakan Kembali Melambat
Demokrat Ambil Alih Parlemen: Hasil Jajak Pendapat dan Estimasi Analisis

Indonesia Economic Data

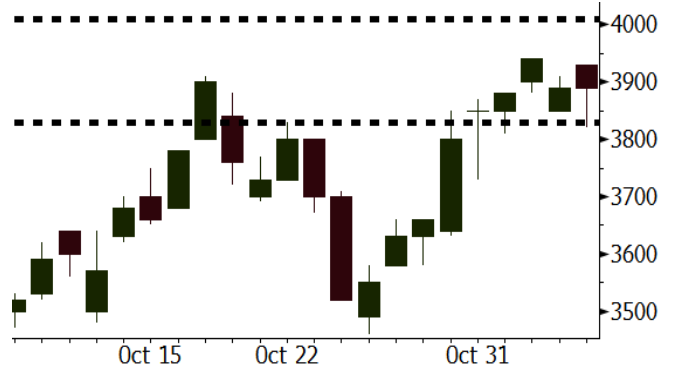
Monthly Indicator	Last	Prev.	Quarterly Indicator	Last	Prev.
BI 7 Day Rev Repo Rate	5.75%	5.75%	Real GDP	5.17%	5.27%
FX Reserve (USD bn)	114.85	117.90	Current Acc (USD bn)	(8.03)	(5.54)
Trd Balance (USD bn)	0.23	(1.02)	Govt. Spending Yoy	6.28%	5.26%
Exports Yoy	1.70%	4.15%	FDI (USD bn)	5.50	3.49
Imports Yoy	14.18%	24.65%	Business Confidence	112.82	106.28
Inflation Yoy	3.16%	2.88%	Cons. Confidence*	119.20	122.40

TLKM Last = 3890

Analysis Pada 3Q18, TLKM membukukan laba bersih sebesar Rp5,6 triliun, pulih dari realisasi sebesar Rp3,0 triliun pada 2Q18. Hal ini menandakan bahwa kinerja TLKM sudah kembali *on track*.

Range 3830 – 4010

Action Trading Buy. Cut Loss If Below 3830



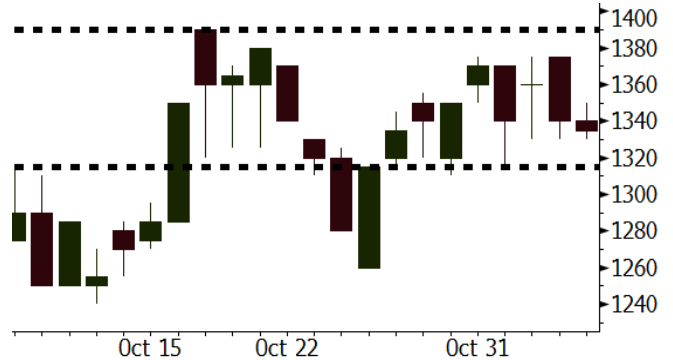
Source: Bloomberg

KLBF Last = 1335

Analysis Tren pergerakan rupiah yang mulai menunjukkan penguatan memberikan sentimen positif bagi KLBF yang memiliki eksposur operasional bisnis yang cukup tinggi terhadap dolar.

Range 1315 – 1390

Action Trading Buy. Cut Loss If Below 1315



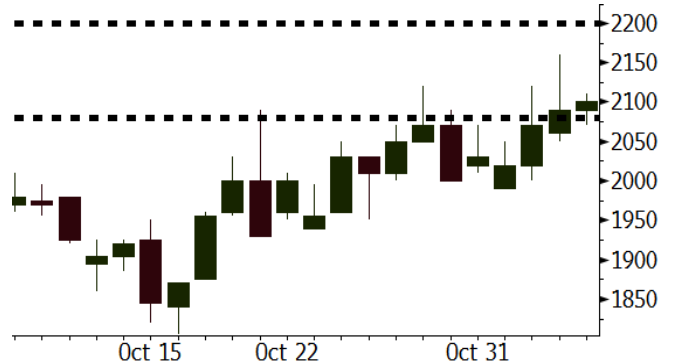
Source: Bloomberg

JPFA Last = 2100

Analysis Meskipun JPFA mampu membukukan pertumbuhan laba bersih sebesar 55,7%, valuasinya masih cukup atraktif. JPFA diperdagangkan pada P/E sebesar 13,3x, jauh di bawah rata-rata 5 tahun terakhir sebesar 25,5x.

Range 2080 – 2200

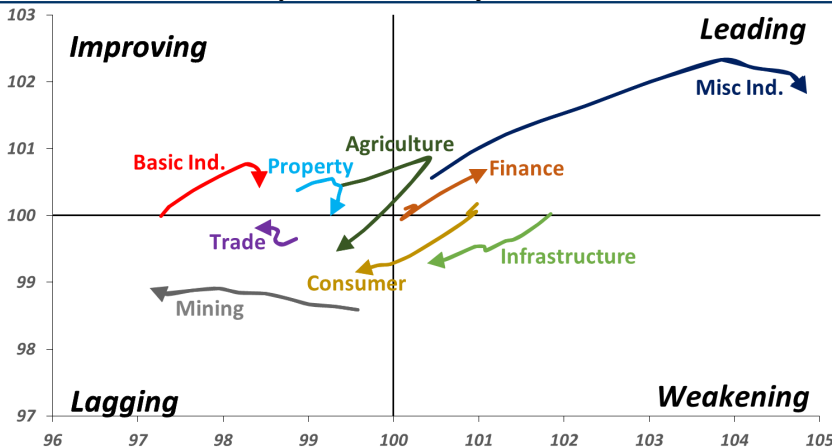
Action Trading buy. Cut Loss If Below 2080



Source: Bloomberg

Sector Rotation

Relative Rotation Graph - Last 10 Days



Source: Bloomberg

Relative Valuation

	Last Price	End of Last Year Price	Target Price*	Rating	Upside Potential (%)	1 Year Change (%)	Market Cap (IDR tn)	Price / EPS (TTM)	Price / BVPS	Return on Equity (%)	Dividend Yield TTM (%)	Sales Growth Yoy (%)	EPS Growth Yoy (%)	Adjusted Beta
JCI Index	5,924	6,356				(2.3)	6,720.2							
Finance						5.7	2,076.0							
BBCA	24,400	21,900	27,650	Hold	13.3	15.9	601.6	24.1x	4.2x	18.4	1.0	7.5	10.0	0.9
BBRI	3,330	3,640	3,930	Buy	18.0	2.8	410.7	12.7x	2.3x	19.3	3.2	7.9	14.5	1.5
BMRI	7,350	8,000	8,275	Hold	12.6	3.2	343.0	14.5x	2.0x	14.2	2.7	2.7	20.1	1.4
BBNI	7,750	9,900	9,675	Buy	24.8	(2.5)	144.5	9.7x	1.4x	15.1	3.3	10.0	12.5	1.4
BBTN	2,340	3,570	3,280	Buy	40.2	(19.3)	24.8	7.6x	1.1x	14.9	2.4	14.5	11.6	1.8
BJTM	660	710	810	Buy	22.7	(5.0)	9.9	8.2x	1.2x	15.5	6.7	#N/A	N/A	4.5
Consumer						(4.7)	1,379.5							
HMSP	3,780	4,730	4,225	Hold	11.8	(4.1)	439.7	33.8x	14.0x	41.8	2.8	7.2	3.8	1.2
GGRM	80,025	83,800	88,650	Hold	10.8	4.2	154.0	19.0x	3.6x	19.6	3.2	13.6	6.3	1.3
UNVR	43,000	55,900	49,600	Buy	15.3	(12.9)	328.1	36.1x	36.6x	118.0	2.1	1.0	39.7	1.0
ICBP	8,900	8,900	10,550	Buy	18.5	3.8	103.8	24.5x	5.0x	21.3	2.5	7.5	14.6	1.0
INDF	5,825	7,625	8,175	Buy	40.3	(28.3)	51.1	13.8x	1.6x	11.7	5.2	3.1	(13.7)	1.2
KLBF	1,335	1,690	1,730	Buy	29.6	(17.6)	62.6	25.8x	4.5x	18.3	1.9	3.9	1.4	1.3
KAEF	2,550	2,700	2,890	Hold	13.3	(3.4)	14.2	39.3x	5.4x	14.5	0.7	23.4	17.4	1.1
Infrastructure						(9.8)	719.21							
TLKM	3,890	4,399	4,700	Buy	20.8	(6.3)	385.4	20.9x	4.3x	20.4	4.3	2.3	(20.6)	0.9
EXCL	2,230	2,960	3,930	Buy	76.2	(37.5)	23.8	N/A	1.1x	(0.0)	N/A	(0.1)	N/A	1.1
ISAT	2,350	4,800	6,750	Buy	187.2	(58.4)	12.8	N/A	1.0x	(2.6)	3.1	(26.8)	N/A	0.9
PGAS	2,080	1,750	2,600	Buy	25.0	12.7	50.4	14.3x	1.1x	7.6	1.5	15.0	200.0	1.4
JSMR	4,090	6,400	6,050	Buy	47.9	(38.7)	29.7	14.3x	1.8x	13.4	1.5	18.7	(6.9)	1.0
TBIG	4,650	6,425	6,050	Buy	30.1	(30.9)	21.1	9.4x	7.0x	104.6	3.6	7.1	8.1	0.6
INDY	2,480	3,060	5,000	Buy	101.6	(3.1)	12.9	2.4x	0.9x	43.7	4.3	213.9	37.8	0.9
Trade						(14.1)	685.2							
UNTR	33,500	35,400	39,550	Buy	18.1	(6.4)	125.0	11.5x	2.4x	22.6	2.9	32.1	60.8	1.1
AKRA	3,460	6,350	4,650	Buy	34.4	(54.5)	13.9	18.7x	1.7x	19.3	6.4	25.3	(22.4)	1.2
SCMA	1,655	2,480	2,025	Buy	22.4	(16.0)	24.2	17.0x	5.3x	32.3	4.5	10.8	8.7	1.2
MNCN	840	1,285	1,125	Buy	33.9	(43.2)	12.0	8.6x	1.1x	14.2	1.8	2.8	(20.3)	1.1
LPPF	4,680	10,000	5,480	Buy	17.1	(54.5)	13.7	7.2x	5.5x	85.6	9.8	3.1	(0.6)	1.0
ACES	1,380	1,155	1,635	Buy	18.5	13.6	23.7	24.8x	6.2x	26.6	1.7	22.3	32.7	1.1
RALS	1,160	1,200	1,525	Buy	31.5	28.2	8.2	13.8x	2.1x	15.7	3.4	2.2	43.4	0.9
MAPI	810	620	945	Buy	16.7	21.8	13.4	23.2x	2.6x	14.0	0.5	18.3	126.7	1.0
Property						(18.6)	357.7							
BSDE	1,160	1,700	1,850	Buy	59.5	(34.1)	22.3	6.9x	0.9x	13.2	N/A	(18.9)	(74.2)	1.4
PWON	550	685	600	Hold	9.1	(14.7)	26.5	11.9x	2.2x	20.6	1.1	19.0	25.2	1.2
CTRA	840	1,185	1,050	Buy	25.0	(31.4)	15.6	17.2x	1.1x	6.8	1.1	7.9	1.7	1.6
SMRA	635	945	670	Hold	5.5	(37.7)	9.2	20.5x	1.4x	6.9	0.8	0.7	75.0	1.5
WSKT	1,505	2,210	2,810	Buy	86.7	(31.6)	20.4	3.9x	1.2x	33.2	3.8	27.0	41.1	1.3
PTPP	1,410	2,640	3,850	Buy	173.0	(50.9)	8.7	6.5x	0.7x	11.9	3.3	7.5	(11.9)	1.3
WIKA	1,190	1,550	2,150	Buy	80.7	(40.5)	10.7	7.7x	0.8x	11.0	2.3	32.3	26.0	1.0
ADHI	1,310	1,885	2,160	Buy	64.9	(42.0)	4.7	7.2x	0.8x	11.1	2.2	8.2	63.6	1.2
Misc Ind.						(2.1)	400.8							
ASII	8,100	8,300	8,925	Hold	10.2	(1.2)	327.9	15.1x	2.5x	17.3	2.3	16.4	20.6	1.2
Basic Ind.						9.7	582.8							
INTP	17,875	21,950	21,575	Buy	20.7	(23.3)	65.8	61.4x	2.9x	4.6	3.9	2.5	(56.1)	1.4
SMGR	9,750	9,900	11,550	Buy	18.5	(5.6)	57.8	21.9x	1.9x	9.0	1.4	4.4	43.1	1.2
CPIN	5,575	3,000	6,700	Buy	20.2	67.4	91.4	22.6x	5.0x	24.2	1.0	5.1	79.7	1.0
JPFA	2,100	1,300	3,250	Buy	54.8	57.9	24.6	13.3x	2.7x	20.2	4.8	16.8	104.2	0.7
MAIN	1,310	740	1,930	Buy	47.3	51.4	2.9	12.5x	1.6x	7.9	1.2	19.2	8200.0	1.2
KRAS	380	424	500	Buy	31.6	(23.4)	7.4	N/A	0.3x	(2.5)	N/A	22.7	51.3	1.1
TPIA	4,770	6,000	6,275	Buy	31.6	(14.5)	85.1	23.7x	3.2x	14.2	1.4	9.1	(34.2)	0.8
Mining						14.2	421.2							
ADRO	1,630	1,860	2,500	Buy	53.4	(14.2)	52.1	8.3x	1.0x	11.9	6.6	9.3	(16.0)	1.1
PTBA	4,450	2,460	5,375	Buy	20.8	84.6	51.3	8.7x	3.5x	42.8	7.2	17.0	54.0	1.0
ITMG	24,275	20,700	32,400	Buy	33.5	12.8	27.4	7.3x	2.0x	27.6	13.4	8.0	(10.0)	1.1
INCO	3,160	2,890	3,760	Buy	19.0	(4.0)	31.4	33.9x	1.1x	3.2	N/A	29.2	N/A	1.5
ANTM	680	625	1,200	Buy	76.5	(2.2)	16.3	16.7x	0.9x	5.3	0.3	292.4	N/A	1.2
TINS	655	775	1,240	Buy	89.3	(30.7)	4.9	9.2x	0.8x	8.8	3.6	1.8	13.1	1.2
MEDC	820	890	1,025	Buy	25.0	20.1	14.6	16.7x	0.8x	7.8	N/A	42.4	51.2	1.6
ELSA	368	372	625	Buy	69.8	8.2	2.7	7.0x	0.8x	12.4	1.4	39.7	157.9	1.3
Agriculture						(14.0)	97.7							
AALI	11,450	13,150	16,925	Buy	47.8	(21.2)	22.0	12.8x	1.2x	9.5	3.8	9.1	(18.2)	0.6
LSIP	1,245	1,420	1,500	Buy	20.5	(19.7)	8.5	18.1x	1.0x	5.7	3.6	(19.6)	(39.3)	0.7

* Target Price for December 2018

Source: Bloomberg, NHKS Research

ADRO : Produksi AMC Ditargetkan 1 Juta Ton

PT Adaro Energy Tbk (ADRO) memproyeksikan volume batu bara berkalori tinggi yang diproduksi oleh Adaro MetCoal Companies (AMC) mencapai 1 juta ton pada 2018. Hingga September, AMC mencatatkan volume produksi dan volume penjualan yang sebesar 0,86 juta ton (+27% y-y) dan 0,71 juta ton (+15% y-y). Selain itu, volume produksi batu bara kokas dari tambang Kestrel juga tercatat 0,78 juta ton pada Agustus-September 2018. (Bisnis Indonesia)

GMFI : Membidik Porsi Pendapatan Internasional 50%

PT Garuda Maintenance Facility Aero Asia Tbk (GMFI) membidik porsi pendapatan dari konsumen internasional dapat mencapai 50% pada 2019. Pada 3Q18, pendapatan GMFI dikontribusikan oleh pasar domestik sebesar 70% dan pasar internasional 30%. GMFI juga akan melakukan kerja sama dengan Uni Emirat Arab dan Australia. Pendapatan GMFI hingga September tercatat tumbuh menjadi US\$334,69 juta (+7,8% y-y). (Kontan)

INDY : Proyeksi Produksi Premium 1,3 Juta Ton

PT Indika Energy Tbk (INDY) memproyeksikan volume produksi batu bara premium dapat mencapai 1,3 juta ton pada 2018. Adapun batu bara premium ini dihasilkan melalui PT Multi Tambangjaya Utama (MUTU). Hingga September, volume penjualan MUTU dan Kideco Jaya Agung tercatat sebesar 0,7 juta ton dan 26,1 juta ton. Tren kenaikan harga batu bara turut meningkatkan ASP menjadi US\$54 per ton. (Bisnis Indonesia)

HEXA : Penjualan 2018 Dapat Tumbuh 33,9%

PT Hexindo Adiperkasa Tbk (HEXA) memproyeksikan bahwa penjualan pada tahun fiskal 2018 dapat tumbuh sebesar 33,9% y-y, dengan volume penjualan alat berat sebesar 2.060 unit. Hingga September, HEXA telah menjual 965 unit alat berat atau setara dengan 46,8% dari target tersebut. Penjualan ini berasal dari sektor agribisnis sebesar 29%, konstruksi 25%, kehutanan 24%, dan pertambangan 22%. (Bisnis Indonesia)

Domestic & Global News

Penjualan Eceran Oktober Diperkirakan Kembali Melambat

Penjualan eceran Oktober 2018 diperkirakan kembali tumbuh melambat, melanjutkan perlambatan September 2018. Padahal di Oktober tahun lalu, pertumbuhan penjualan eceran lebih tinggi dari bulan sebelumnya. Dari hasil survei penjualan eceran yang dilakukan oleh Bank Indonesia (BI), Indeks Penjualan Riil (IPR) Oktober diperkirakan hanya tumbuh 3,9% y-y. Angka ini melambat dibanding pertumbuhan IPR Agustus dan September yang masing-masing mencapai 6,1% y-y dan 4,8% y-y. (Kontan)

Demokrat Ambil Alih Parlemen: Hasil Jajak Pendapat dan Estimasi Analisis

Pemilu *midterm* yang dilaksanakan di AS pada Selasa, 11/07/2018, berdampak signifikan terhadap masa depan program tunjangan kesehatan, pajak, imigrasi, ekonomi AS dan investor. Jajak pendapat memperkirakan bahwa Partai Demokrat berpeluang mengambil alih Parlemen, sedangkan Partai Republik berpeluang tipis untuk memenangkan kursi Senat. Deviasi dari prakiraan hasil pemilu akan berdampak signifikan terhadap investor. (CNBC)

Date	Country	Hour Jakarta	Event	Period	Actual	Consensus	Previous
Tuesday	GER	14:00	Factory Orders MoM	Sep	0.30%	-0.50%	2.00%
06 - Nov	EU	16:00	Markit Eurozone Composite PMI	Oct F	53.1	52.7	52.7
Wednesday	GER	14:00	Industrial Production SA MoM	Sep		-0.30%	-0.30%
07 - Nov							
Thursday	CHN	Tentative	Trade Balance	Oct		--	\$31.69b
08 - Nov	CHN	Tentative	Imports YoY	Oct		--	14.30%
	CHN	Tentative	Exports YoY	Oct		--	14.50%
	JPN	06:50	Core Machine Orders MoM	Sep		-9.00%	6.80%
	JPN	06:50	BoP Current Account Balance	Sep		¥1786.5b	¥1838.4b
	USA	20:30	Initial Jobless Claims	3-Nov		--	214k
Friday	USA	02:00	FOMC Rate Decision (Upper Bound)	8-Nov		2.25%	2.25%
09 - Nov	USA	02:00	FOMC Rate Decision (Lower Bound)	8-Nov		2.00%	2.00%
	CHN	08:30	PPI YoY	Oct		--	3.60%
	CHN	08:30	CPI YoY	Oct		--	2.50%
	UK	16:30	Industrial Production MoM	Sep		-0.10%	0.20%
	UK	16:30	Manufacturing Production MoM	Sep		-0.20%	-0.20%
	UK	16:30	GDP QoQ	3Q P		0.50%	0.40%
	UK	16:30	GDP YoY	3Q P		1.40%	1.20%
	USA	20:30	PPI Final Demand MoM	Oct		0.20%	0.20%

Source: Bloomberg

Domestic Economic Calendar

Date	Hour Jakarta	Event	Period	Actual	Consensus	Prev.
Monday	Tentative	GDP QoQ	3Q	3.09%	3.07%	4.21%
05 - Nov	Tentative	GDP YoY	3Q	5.17%	5.18%	5.27%
	Tentative	Consumer Confidence Index	Oct	119.2	--	121.6
Wednesday	Tentative	Net Foreign Assets IDR	Oct		--	1675.4t
07 - Nov	Tentative	Foreign Reserves	Oct		--	\$114.85b
Friday	Tentative	BoP Current Account Balance	3Q		-\$8900m	-\$8028m
09 - Nov						

Source: Bloomberg

Corporate Calendar

Date	Event	Company
Monday	Extraordinary Shareholder Meeting	BMSR
05 - Nov	IPO Listing Date	SATU
	Cum Dividend Date	ICBP (IDR58 per share) INDF (IDR65 per share)
Tuesday	Extraordinary Shareholder Meeting	GMFI, PRIM, SRAJ
06 - Nov	IPO Listing Date	SOSS
	Cum Dividend Date	SMSM (IDR15 per share)
Wednesday	Annual Shareholder Meeting	CLEO
07 - Nov	Extraordinary Shareholder Meeting	BIMA
Thursday	Cum Dividend Date	MLBI (IDR47 per share)
08 - Nov		
Friday	Annual Shareholder Meeting	NRCA
09 - Nov	Extraordinary Shareholder Meeting	AMAG
	IPO Listing Date	Dewata Freight International

Source: Bloomberg

DISCLAIMER

This report and any electronic access hereto are restricted and intended only for the clients and related entities of PT NH Korindo Sekuritas Indonesia. This report is only for information and recipient use. It is not reproduced, copied, or made available for others. Under no circumstances is it considered as a selling offer or solicitation of securities buying. Any recommendation contained herein may not suitable for all investors. Although the information hereof is obtained from reliable sources, its accuracy and completeness cannot be guaranteed. PT NH Korindo Sekuritas Indonesia, its affiliated companies, employees, and agents are held harmless from any responsibility and liability for claims, proceedings, action, losses, expenses, damages, or costs filed against or suffered by any person as a result of acting pursuant to the contents hereof. Neither is PT NH Korindo Sekuritas Indonesia, its affiliated companies, employees, nor agents are liable for errors, omissions, misstatements, negligence, inaccuracy contained herein.

All rights reserved by PT NH Korindo Sekuritas Indonesia



PT. NH Korindo Sekuritas Indonesia

Member of Indonesia Stock Exchange

Head Office :

Wisma Korindo 7th Floor
Jl. M.T. Haryono Kav. 62
Pancoran, Jakarta 12780
Indonesia
Telp: +62 21 7976202
Fax : +62 21 7976206

Branch Office BSD:

ITC BSD Blok R No.48
Jl. Pahlawan Seribu Serpong
Tangerang Selatan 15322
Indonesia
Telp : +62 21 5316 2049
Fax : +62 21 5316 1687

Branch Office Solo :

Jl. Ronggowarsito No. 8
Kota Surakarta
Jawa Tengah 57111
Indonesia
Telp: +62 271 664763
Fax : +62 271 661623

A Member of NH Investment & Securities Global Network

Seoul | New York | Hong Kong | Singapore | Shanghai | Beijing | Hanoi |
Jakarta