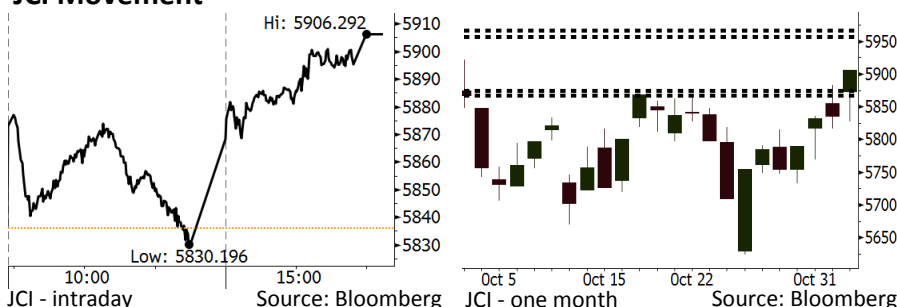


Morning Brief

Daily | Nov 5, 2018

JCI Movement



IHSG (Jakarta Composite Index)

November 2	5,906.29
Chg	+70.37pts (+1.21%)
Volume (bn shares)	92.45
Value (IDR tn)	10.44
Adv 197 Dec 182 Unc 248 Untr 134	

Foreign Transaction		(IDR bn)
Buy		4,313
Sell		3,149
Net Buy (Sell)		1,164

Top Buy	NB Val.	Top Sell	NS Val.
BBCA	223.9	PGAS	162.7
ASII	204.4	ADRO	16.8
TLKM	157.6	WSKT	10.0
BBRI	151.3	UNTR	9.9
BBNI	92.3	WSBP	9.9

LQ-45 Index		Top Gainers & Losers	
Gainers	%	Losers	%
GGRM	6.6%	PGAS	-9.1%
INCO	5.9%	INDY	-5.9%
SMGR	5.1%	EXCL	-5.9%
BBTN	4.9%	ADRO	-3.7%
SCMA	4.7%	MEDC	-1.9%

Government Bond Yield & FX		
	Last	Chg.
Tenor: 10 year	8.34%	-0.14%
USDIDR	14,955	-1.14%
KRWIDR	13.37	-0.07%

Global Indexes			
Index	Last	Chg.	%
Dow Jones	25,270.83	(109.91)	-0.43%
S&P 500	2,723.06	(17.31)	-0.63%
Nasdaq	7,356.99	(77.06)	-1.04%
FTSE 100	7,094.12	(20.54)	-0.29%
CAC 40	5,102.13	16.35	0.32%
DAX	11,518.99	50.45	0.44%
Nikkei	22,243.66	556.01	2.56%
Hang Seng	26,486.35	1070.35	4.21%
Shanghai	2,676.48	70.24	2.70%
KOSPI	2,096.00	71.54	3.53%
EIDO	22.87	0.04	0.18%

Commodities			
Commodity	Last	Chg.	%
Gold (USD /troy oz.)	1,232.9	(0.5)	-0.04%
Crude Oil (USD /bbl)	63.14	(0.55)	-0.86%
Coal Newcas(USD/ton)	102.90	0.85	0.83%
Gas (USD /mmbtu)	3.28	0.05	1.45%
Nickel LME (USD /MT)	11,930	145.0	1.23%
Tin LME (USD /MT)	19,100	0.0	0.00%
CPO (MYR/Ton)	2,153	9.0	0.42%

Market Recap

Mengikuti bursa regional, IHSG ditutup naik pada Jumat lalu. Sektor konsumen menjadi pendorong utama terkait pembatalan rencana kenaikan cukai rokok.

Top Gainers: Property (+2.41%), Consumer (+2.41%), Finance (+1.40%)

Bursa Eropa dan Asia bergerak naik pada Jumat lalu ditopang oleh prospek meredanya tensi perang dagang Tiongkok-AS terkait pembicaraan pemimpin kedua negara. Bursa Hong Kong pun melonjak hingga 4%. Di sisi lain, penurunan sektor teknologi menekan bursa AS. Investor AS juga mengkhawatirkan akselerasi kenaikan suku bunga seiring dengan tren kenaikan upah.

Today's Outlook: Rilis Pertumbuhan PDB 3Q18

Untuk hari ini kami mengestimasi IHSG bergerak menguat dengan **support range 5867-5874** dan **resistance range 5957-5967**. Pasar pada hari ini akan menanti rilis pertumbuhan PDB Indonesia pada 3Q18. Konsensus memperkirakan bahwa pertumbuhan PDB 3Q18 akan mencapai 5,18% y-y, di bawah pertumbuhan pada 2Q18 sebesar 5,27%. Pasar terutama akan mencerna pertumbuhan pada sektor konsumsi. Sektor konsumsi saat ini merupakan kontributor pertumbuhan setelah sektor investasi mulai mengalami perlambatan.

Dari global, sentimen positif datang dari berlanjutnya penurunan harga minyak global. AS memberikan dispensasi terhadap 8 negara untuk tetap dapat mengimpor minyak dari Iran. Kondisi ini membuat pasar tidak lagi kuatir terhadap efek sanksi AS terhadap Iran.

Stocks Recommendation (details on the next page)

Trading Buy: INCO, JPFA, UNVR

Company News

WSKT	: Pendapatan 3Q18 Naik 27%
GIAA	: Rugi Bersih Menyusut 48,6%
PTPP	: Laba Bersih Tergerus Kenaikan Beban Bunga
HRUM	: Pendapatan 3Q18 Turun Tipis 2,3%

Domestic & Global News

Rupiah Menguat ke Rp14.955 per Dolar AS
Minyak AS Anjlok 6.6% dan Bertengger pada US\$63,14

Indonesia Economic Data

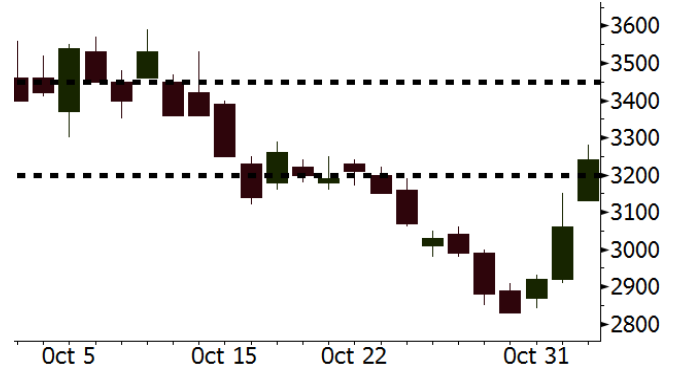
Monthly Indicator	Last	Prev.	Quarterly Indicator	Last	Prev.
BI 7 Day Rev Repo Rate	5.75%	5.75%	Real GDP	5.27%	5.06%
FX Reserve (USD bn)	114.85	117.90	Current Acc (USD bn)	(8.03)	(5.54)
Trd Balance (USD bn)	0.23	(1.02)	Govt. Spending Yoy	5.26%	2.73%
Exports Yoy	1.70%	4.15%	FDI (USD bn)	5.50	3.49
Imports Yoy	14.18%	24.65%	Business Confidence	112.82	106.28
Inflation Yoy	3.16%	2.88%	Cons. Confidence*	122.40	121.60

INCO Last = 3240

Analysis Harga nikel kembali melanjutkan *rally*. Mulai mencairnya hubungan antara Presiden AS dan Tiongkok memberikan harapan bahwa negosiasi dagang akan terwujud dan berimplikasi pada perbaikan permintaan nikel global.

Range 3200 – 3450

Action Trading Buy. Cut Loss If Below 3020



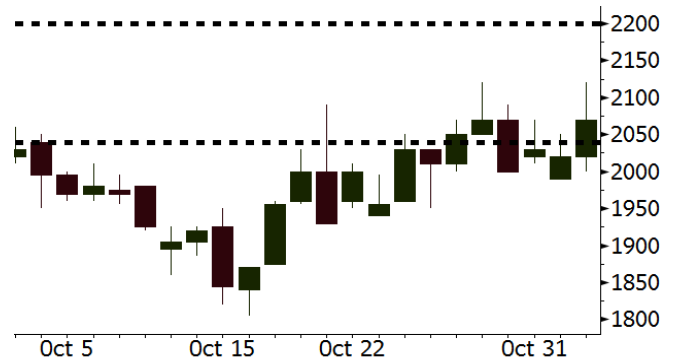
Source: Bloomberg

JPFA Last = 2070

Analysis Keputusan pemerintah mengimpor maksimal 100 ribu ton jagung memberikan sentimen positif bagi sektor *poultry*. Kebijakan ini akan membuat beban dari perusahaan *poultry* semakin terkontrol.

Range 2040 – 2200

Action Trading Buy. Cut Loss If Below 2040



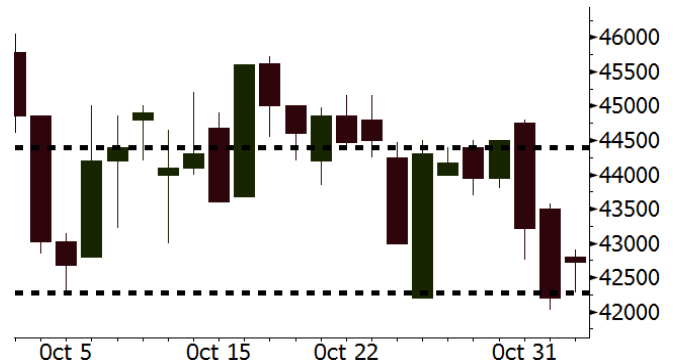
Source: Bloomberg

UNVR Last = 42725

Analysis Valuasi UNVR saat ini sangat atraktif. P/E berada pada posisi 35,9x, jauh di bawah rata-rata dua tahun terakhir sebesar 52,2x.

Range 42275 – 44400

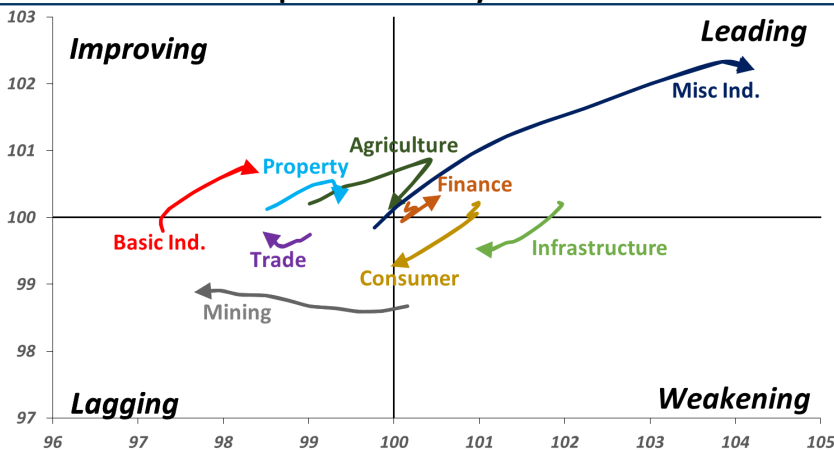
Action Trading buy. Cut Loss If Below 42275



Source: Bloomberg

Sector Rotation

Relative Rotation Graph - Last 10 Days



Source: Bloomberg

Relative Valuation

	Last Price	End of Last Year Price	Target Price*	Rating	Upside Potential (%)	1 Year Change (%)	Market Cap (IDR tn)	Price / EPS (TTM)	Price / BVPS	Return on Equity (%)	Dividend Yield TTM (%)	Sales Growth Yoy (%)	EPS Growth Yoy (%)	Adjusted Beta
JCI Index	5,906	6,356				(2.2)	6,699.7							
Finance						5.2	2,060.1							
BBCA	24,000	21,900	27,650	Buy	15.2	14.1	591.7	23.7x	4.1x	18.4	1.1	7.5	10.0	0.9
BBRI	3,280	3,640	3,930	Buy	19.8	2.5	404.6	12.5x	2.3x	19.3	3.3	7.9	14.5	1.5
BMRI	7,425	8,000	7,500	Hold	1.0	2.4	346.5	14.6x	2.0x	14.2	2.7	2.7	20.1	1.4
BBNI	7,775	9,900	9,675	Buy	24.4	0.3	145.0	9.7x	1.4x	15.1	3.3	10.0	12.5	1.4
BBTN	2,350	3,570	3,280	Buy	39.6	(18.4)	24.9	7.6x	1.1x	14.9	2.4	14.5	11.6	1.8
BJTM	650	710	810	Buy	24.6	(6.5)	9.7	8.1x	1.2x	15.5	6.8	#N/A	N/A	4.5
Consumer						(5.3)	1,375.4							
HMSP	3,800	4,730	4,225	Hold	11.2	(4.8)	442.0	34.0x	14.1x	41.8	2.8	7.2	3.8	1.2
GGRM	77,075	83,800	88,650	Buy	15.0	4.7	148.3	18.3x	3.5x	19.6	3.4	13.6	6.3	1.3
UNVR	42,725	55,900	49,600	Buy	16.1	(14.3)	326.0	35.9x	36.3x	118.0	2.1	1.0	39.7	1.0
ICBP	8,925	8,900	10,550	Buy	18.2	0.8	104.1	24.5x	5.0x	21.3	1.8	7.5	14.6	1.0
INDF	6,025	7,625	8,175	Buy	35.7	(26.7)	52.9	14.3x	1.6x	11.7	3.9	3.1	(13.7)	1.2
KLBF	1,360	1,690	1,730	Buy	27.2	(15.5)	63.8	26.3x	4.6x	18.3	1.8	3.9	1.4	1.3
KAEF	2,560	2,700	2,890	Hold	12.9	(4.8)	14.2	39.5x	5.7x	14.9	0.7	26.5	17.4	1.1
Infrastructure						(7.8)	725.02							
TLKM	3,940	4,399	4,700	Buy	19.3	(2.8)	390.3	21.1x	4.3x	20.4	4.3	2.3	(20.6)	0.9
EXCL	2,090	2,960	3,930	Buy	88.0	(41.3)	22.3	N/A	1.0x	(0.0)	N/A	(0.1)	N/A	1.1
ISAT	2,350	4,800	6,750	Buy	187.2	(59.7)	12.8	N/A	1.0x	(2.6)	3.1	(26.8)	N/A	0.9
PGAS	2,010	1,750	2,600	Buy	29.4	12.9	48.7	13.7x	1.0x	7.6	1.6	15.0	200.0	1.4
JSMR	4,180	6,400	6,050	Buy	44.7	(35.9)	30.3	14.7x	1.9x	13.4	1.5	18.7	(6.9)	1.0
TBIG	4,700	6,425	6,050	Buy	28.7	(31.1)	21.3	9.5x	7.1x	104.6	3.6	7.1	8.1	0.6
INDY	2,240	3,060	5,000	Buy	123.2	(5.5)	11.7	2.1x	0.8x	43.7	4.8	213.9	37.8	0.9
Trade						(14.6)	681.1							
UNTR	32,875	35,400	39,550	Buy	20.3	(6.9)	122.6	11.3x	2.4x	22.6	3.0	32.1	60.8	1.1
AKRA	3,520	6,350	4,650	Buy	32.1	(53.5)	14.1	19.0x	1.8x	19.3	6.3	25.3	(22.4)	1.2
SCMA	1,665	2,480	2,025	Buy	21.6	(14.6)	24.3	17.1x	5.3x	32.3	4.5	10.8	8.7	1.2
MNCN	820	1,285	1,125	Buy	37.2	(45.5)	11.7	8.4x	1.1x	14.2	1.8	2.8	(20.3)	1.1
LPPF	4,830	10,000	5,480	Hold	13.5	(52.6)	14.1	7.4x	5.7x	85.6	9.5	3.1	(0.6)	1.0
ACES	1,395	1,155	1,635	Buy	17.2	15.8	23.9	25.0x	6.2x	26.6	1.6	22.3	32.7	1.1
RALS	1,150	1,200	1,525	Buy	32.6	28.5	8.2	13.7x	2.1x	15.7	3.5	2.2	43.4	0.9
MAPI	800	620	945	Buy	18.1	20.3	13.3	22.9x	2.6x	14.0	0.5	18.3	126.7	1.0
Property						(18.8)	355.3							
BSDE	1,120	1,700	1,850	Buy	65.2	(36.7)	21.6	6.7x	0.8x	13.2	N/A	(18.9)	(74.2)	1.4
PWON	540	685	600	Hold	11.1	(15.0)	26.0	11.7x	2.2x	20.6	1.1	19.0	25.2	1.2
CTRA	845	1,185	1,050	Buy	24.3	(30.7)	15.7	17.3x	1.1x	6.8	1.1	7.9	1.7	1.6
SMRA	620	945	670	Hold	8.1	(38.9)	8.9	20.0x	1.3x	6.9	0.8	0.7	75.0	1.5
WSKT	1,505	2,210	2,810	Buy	86.7	(30.0)	20.4	3.9x	1.2x	33.2	3.8	27.0	41.1	1.3
PTPP	1,390	2,640	3,850	Buy	177.0	(51.7)	8.6	6.4x	0.7x	11.9	3.4	7.5	(11.9)	1.3
WIKA	1,185	1,550	2,150	Buy	81.4	(39.5)	10.6	7.7x	0.8x	11.0	2.3	32.3	26.0	1.0
ADHI	1,230	1,885	2,160	Buy	75.6	(45.6)	4.4	6.8x	0.7x	11.1	2.4	8.2	63.6	1.2
Misc Ind.						(0.2)	404.4							
ASII	8,175	8,300	8,925	Hold	9.2	0.9	331.0	15.2x	2.5x	17.3	2.3	16.4	20.6	1.2
Basic Ind.						10.9	584.5							
INTP	17,350	21,950	21,575	Buy	24.4	(25.5)	63.9	59.6x	2.8x	4.6	4.0	2.5	(56.1)	1.4
SMGR	9,725	9,900	11,550	Buy	18.8	(6.3)	57.7	21.9x	1.9x	9.0	1.4	4.4	43.1	1.2
CPIN	5,525	3,000	6,700	Buy	21.3	69.0	90.6	22.4x	5.0x	24.2	1.0	5.1	79.7	1.0
JPFA	2,070	1,300	3,250	Buy	57.0	55.1	24.3	13.1x	2.7x	20.2	4.8	16.8	104.2	0.7
MAIN	1,370	740	1,930	Buy	40.9	55.7	3.1	13.1x	1.7x	7.9	1.2	19.2	8200.0	1.2
KRAS	374	424	500	Buy	33.7	(24.6)	7.2	N/A	0.3x	(2.5)	N/A	22.7	51.3	1.1
TPIA	4,770	6,000	6,275	Buy	31.6	(13.7)	85.1	23.5x	3.2x	14.2	1.4	9.1	(34.2)	0.8
Mining						13.1	415.2							
ADRO	1,585	1,860	2,500	Buy	57.7	(16.4)	50.7	8.0x	0.9x	11.9	6.8	9.3	(16.0)	1.1
PTBA	4,200	2,460	5,375	Buy	28.0	81.8	48.4	8.2x	3.3x	42.8	7.6	17.0	54.0	1.0
ITMG	24,500	20,700	32,400	Buy	32.2	8.9	27.7	7.3x	2.0x	27.6	13.3	8.0	(10.0)	1.1
INCO	3,240	2,890	3,760	Buy	16.0	5.2	32.2	34.4x	1.2x	3.2	N/A	29.2	N/A	1.5
ANTM	695	625	1,200	Buy	72.7	3.7	16.7	17.1x	0.9x	5.3	0.3	292.4	N/A	1.2
TINS	650	775	1,240	Buy	90.8	(28.6)	4.8	9.1x	0.8x	8.8	3.6	1.8	13.1	1.2
MEDC	795	890	1,025	Buy	28.9	14.2	14.1	16.1x	0.7x	7.8	N/A	42.4	51.2	1.6
ELSA	368	372	625	Buy	69.8	21.9	2.7	7.0x	0.8x	12.4	1.4	39.7	157.9	1.3
Agriculture						(13.1)	98.7							
AALI	11,725	13,150	16,925	Buy	44.3	(19.4)	22.6	13.1x	1.2x	9.5	3.7	9.1	(18.2)	0.6
LSIP	1,250	1,420	1,500	Buy	20.0	(18.8)	8.5	18.2x	1.0x	5.7	3.6	(19.6)	(39.3)	0.7

* Target Price for December 2018

Source: Bloomberg, NHKS Research

WSKT : Pendapatan 3Q18 Naik 27%

PT Waskita Karya (Persero) Tbk (WSKT) mencatatkan pendapatan sebesar Rp36,23 triliun (+27% y-y) pada 3Q18. Pencapaian ini didorong oleh kenaikan segmen pendapatan keuangan yang tercatat menjadi Rp1,08 triliun (+232% y-y). Selain itu, WSKT juga mencatatkan laba dari kurs mata uang asing sebesar Rp20,51 miliar, berbalik dari posisi rugi pada 3Q17. Laba bersih 3Q18 juga tercatat tumbuh menjadi Rp3,72 triliun (+43,6% y-y). (Kontan)

PTPP : Laba Bersih Tergerus Kenaikan Beban Bunga

PT PP (Persero) Tbk (PTPP) mencatatkan penurunan laba bersih menjadi Rp874,67 miliar (-11,7% y-y) pada periode Januari-September 2018. Meskipun margin laba kotor tercatat lebih tinggi secara tahunan, namun beban usaha dan beban bunga PTPP melonjak yang masing-masing menjadi Rp600,05 miliar (+35,7% y-y) dan Rp463,88 miliar (+95,0% y-y). Adapun 60% dari kenaikan beban bunga tersebut berasal dari entitas anak. (Bisnis Indonesia)

GIAA : Rugi Bersih Menyusut 48,6%

PT Garuda Indonesia (Persero) Tbk (GIAA) mencatatkan penurunan pada kinerja rugi bersih periode Januari-September 2018, yang tercatat menjadi US\$114,08 juta (-48,6% y-y). Penyusutan ini ditopang oleh kenaikan pendapatan yang menjadi US\$3,21 miliar (+3,4% y-y) dan kenaikan laba atas kurs yang menjadi US\$52,35 juta (+226% y-y). Adapun, GIAA menargetkan rugi bersih pada 2018 tercatat di bawah US\$50 juta. (Kontan)

HRUM : Pendapatan 3Q18 Turun Tipis 2,3%

PT Harum Energy Tbk (HRUM) mencatatkan pendapatan 3Q18 yang turun tipis menjadi US\$232,96 juta (-2,3% y-y). Adapun kenaikan beban pendapatan yang ditambah oleh kenaikan beban penjualan serta beban umum dan administrasi yang masing-masing menjadi US\$15,12 juta (+8,5% y-y) dan US\$22,73 juta (+25,2% y-y) turut menggerus laba bersih. Laba bersih HRUM pada 3Q18 tercatat sebesar US\$22,73 juta (-30,3% y-y). (Kontan)

Domestic & Global News

Rupiah Menguat ke Rp14.955 per Dolar AS

Nilai tukar rupiah melanjutkan penguatannya. Pada penutupan perdagangan di pasar spot pekan lalu, Jumat (2/11), rupiah berhasil keluar dari level Rp15.000 per dolar AS, yaitu ke level Rp14.955 per dolar AS. Sementara dari kurs referensi Jakarta *Interbank Spot Dollar Rate* (JISDOR), rupiah berada di level Rp15.089 per dolar AS. (Kontan)

Minyak AS Anjlok 6.6% dan Bertengger pada US\$63,14

Pada Jumat, 11/05/2018, harga minyak mencatatkan penurunan selama lebih dari 4 minggu. Hal ini dipicu oleh kekhawatiran investor atas kelebihan pasokan minyak setelah AS menyatakan dispensasi terhadap 8 negara untuk tetap dapat mengimpor minyak dari Iran. Sekretaris AS Mike Pompeo mengumumkan keputusan tersebut di telekonferensi. Pada akhir sesi perdagangan harga minyak AS mengakhiri turun 55 sen menjadi US\$63,14 atau anjlok 6.6 persen pada pekan lalu. (CNBC)

Date	Country	Hour Jakarta	Event	Period	Actual	Consensus	Previous
Tuesday	GER	14:00	Factory Orders MoM	Sep		-0.50%	2.00%
06 - Nov	EU	16:00	Markit Eurozone Composite PMI	Oct F		52.7	52.7
Wednesday	GER	14:00	Industrial Production SA MoM	Sep		-0.30%	-0.30%
07 - Nov							
Thursday	CHN	Tentative	Trade Balance	Oct		--	\$31.69b
08 - Nov	CHN	Tentative	Imports YoY	Oct		--	14.30%
	CHN	Tentative	Exports YoY	Oct		--	14.50%
	JPN	06:50	Core Machine Orders MoM	Sep		-9.00%	6.80%
	JPN	06:50	BoP Current Account Balance	Sep		¥1786.5b	¥1838.4b
	USA	20:30	Initial Jobless Claims	3-Nov		--	214k
Friday	USA	02:00	FOMC Rate Decision (Upper Bound)	8-Nov		2.25%	2.25%
09 - Nov	USA	02:00	FOMC Rate Decision (Lower Bound)	8-Nov		2.00%	2.00%
	CHN	08:30	PPI YoY	Oct		--	3.60%
	CHN	08:30	CPI YoY	Oct		--	2.50%
	UK	16:30	Industrial Production MoM	Sep		-0.10%	0.20%
	UK	16:30	Manufacturing Production MoM	Sep		-0.20%	-0.20%
	UK	16:30	GDP QoQ	3Q P		0.50%	0.40%
	UK	16:30	GDP YoY	3Q P		1.40%	1.20%
	USA	20:30	PPI Final Demand MoM	Oct		0.20%	0.20%

Source: Bloomberg

Domestic Economic Calendar

Date	Hour Jakarta	Event	Period	Actual	Consensus	Prev.
Monday	Tentative	GDP QoQ	3Q		3.07%	4.21%
05 - Nov	Tentative	GDP YoY	3Q		5.18%	5.27%
	Tentative	Consumer Confidence Index	Oct		--	121.6
Wednesday	Tentative	Net Foreign Assets IDR	Oct		--	1675.4t
07 - Nov	Tentative	Foreign Reserves	Oct		--	\$114.85b
Friday	Tentative	BoP Current Account Balance	3Q		-\$8900m	-\$8028m
09 - Nov						

Source: Bloomberg

Corporate Calendar

Date	Event	Company
Monday	Extraordinary Shareholder Meeting	BMSR
05 - Nov	IPO Listing Date	SATU
	Cum Dividend Date	ICBP (IDR58 per share) INDF (IDR65 per share)
Tuesday	Extraordinary Shareholder Meeting	GMFI, PRIM, SRAJ
06 - Nov	IPO Listing Date	SOSS
	Cum Dividend Date	SMSM (IDR15 per share)
Wednesday	Annual Shareholder Meeting	CLEO
07 - Nov	Extraordinary Shareholder Meeting	BIMA
Thursday	Cum Dividend Date	MLBI (IDR47 per share)
08 - Nov		
Friday	Annual Shareholder Meeting	NRCA
09 - Nov	Extraordinary Shareholder Meeting	AMAG
	IPO Listing Date	Dewata Freight International

Source: Bloomberg

DISCLAIMER

This report and any electronic access hereto are restricted and intended only for the clients and related entities of PT NH Korindo Sekuritas Indonesia. This report is only for information and recipient use. It is not reproduced, copied, or made available for others. Under no circumstances is it considered as a selling offer or solicitation of securities buying. Any recommendation contained herein may not suitable for all investors. Although the information hereof is obtained from reliable sources, its accuracy and completeness cannot be guaranteed. PT NH Korindo Sekuritas Indonesia, its affiliated companies, employees, and agents are held harmless from any responsibility and liability for claims, proceedings, action, losses, expenses, damages, or costs filed against or suffered by any person as a result of acting pursuant to the contents hereof. Neither is PT NH Korindo Sekuritas Indonesia, its affiliated companies, employees, nor agents are liable for errors, omissions, misstatements, negligence, inaccuracy contained herein.

All rights reserved by PT NH Korindo Sekuritas Indonesia



PT. NH Korindo Sekuritas Indonesia

Member of Indonesia Stock Exchange

Head Office :

Wisma Korindo 7th Floor
Jl. M.T. Haryono Kav. 62
Pancoran, Jakarta 12780
Indonesia
Telp: +62 21 7976202
Fax : +62 21 7976206

Branch Office BSD:

ITC BSD Blok R No.48
Jl. Pahlawan Seribu Serpong
Tangerang Selatan 15322
Indonesia
Telp : +62 21 5316 2049
Fax : +62 21 5316 1687

Branch Office Solo :

Jl. Ronggowarsito No. 8
Kota Surakarta
Jawa Tengah 57111
Indonesia
Telp: +62 271 664763
Fax : +62 271 661623

A Member of NH Investment & Securities Global Network

Seoul | New York | Hong Kong | Singapore | Shanghai | Beijing | Hanoi |
Jakarta