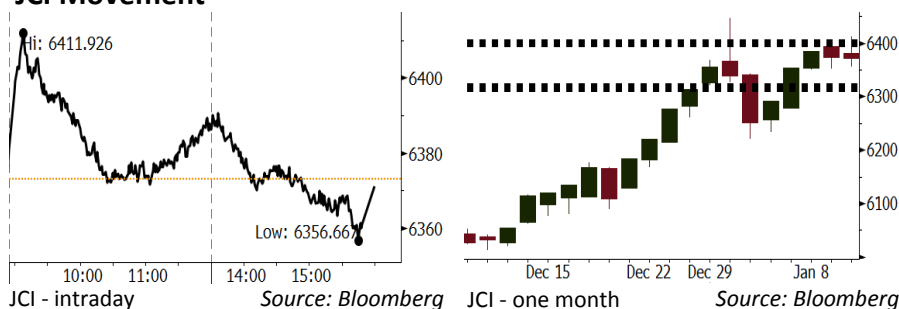


# Morning Brief

Daily | Jan 11, 2018

## JCI Movement



## IHSG (Jakarta Composite Index)

Jan 10	6,371.17
Chg	-1.97pts (-0.03%)
Volume (bn shares)	94.15
Value (IDR tn)	7.66

Adv 164 Dec 189 Unc 227 Untr 115

Foreign Transaction (IDR bn)	
Buy	2,930
Sell	2,829
Net Buy (Sell)	101

Top Buy	NB Val.	Top Sell	NS Val.
BMRI	170.4	BBNI	119.2
UNTR	73.0	BBRI	74.1
BBTN	54.5	TLKM	62.9
ADRO	40.1	SCMA	36.1
BBCA	20.2	JSMR	31.8

LQ-45 Index		Top Gainers & Losers	
Gainers	%	Losers	%
ADRO	8.5%	ICBP	-3.0%
WIKA	7.6%	LPPF	-2.2%
BMTR	7.5%	SSMS	-1.4%
PTPP	7.5%	MNCN	-1.1%
EXCL	6.6%	SCMA	-0.8%

## Government Bond Yield & FX

	Last	Chg.
Tenor: 10 year	6.24%	0.06%
USD/IDR	13,425	-0.10%
KRW/IDR	12.58	0.12%

## Global Indexes

Index	Last	Chg.	%
Dow Jones	25,369.13	(16.67)	-0.07%
S&P 500	2,748.23	(3.06)	-0.11%
Nasdaq	7,153.57	(10.01)	-0.14%
FTSE 100	7,748.51	17.49	0.23%
CAC 40	5,504.68	(19.26)	-0.35%
DAX	13,281.34	(104.25)	-0.78%
Nikkei	23,788.20	(61.79)	-0.26%
Hang Seng	31,073.72	62.31	0.20%
Shanghai	3,421.83	7.94	0.23%
KOSPI	2,499.75	(10.48)	-0.42%
EIDO	28.77	0.02	0.07%

## Commodities

Commodity	Last	Chg.	%
Gold (USD /troy oz.)	1,316.9	4.0	0.31%
Crude Oil (USD /bbl)	63.57	0.61	0.97%
Coal Newcas(USD/ton)	101.05	(1.40)	-1.37%
Gas (USD /mmbtu)	2.91	(1.40)	-0.58%
Nickel LME (USD /MT)	12,935	240.0	1.89%
CPO (MYR/Ton)	2,622	25.0	0.96%

## Indonesian Market Recap

JCI closed flat yesterday after it moved mixed amid the escalating global commodities prices. **Top Losers : Basic Industry (-0.76%), Property (-0.31%), Agriculture (-0.25%)**

## Today's Outlook: Report from China

We estimate JCI to lower with the **support range of 6314-6320 and resistance range of 6397-6403** by today. The global negative sentiment comes from the China's official recommending to reduce or halt the purchase of the U.S. bonds. Considering China as the biggest buyer of the U.S. bonds, the potency of downward liquidity has escalated jitters of global financial market.

## Stocks Recommendation (details on the next page)

Trading Buy: ANTM, INTP, INCO

## Global Market

### United States

The U.S. markets were bearish as China's authority report recommend the decrease in the U.S. bond purchase.

### Europe

European markets closed lower yesterday as investors awaited the release of companies performance and updated economic data.

### Asia

Asia markets moved lower yesterday after Bank of Japan decided to reduce the portion of bond purchase.

## Company News

- ACST : Targets New Contract of IDR10 Trillion
- WIKA : Wins Train Line Bid in Myanmar
- MTLA : Adds Landbank of 200Ha
- BUMI : Obtains Receivables of USD367.5 Million

## Domestic & Global News

- Bappebti Opens Chance of Bitcoin Transaction
- China Is Reportedly Thinking of Halting US Treasury Purchases

## Indonesia Economic Data

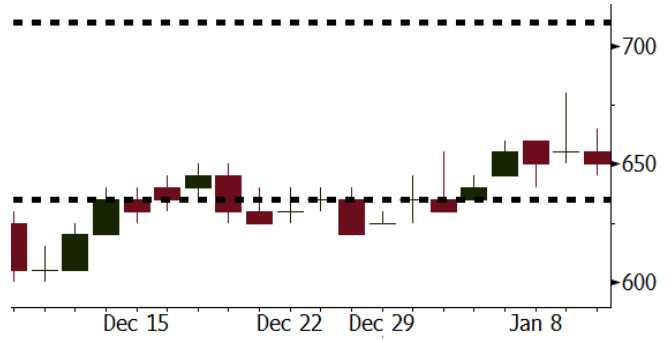
Monthly Indicator	Last	Prev.	Quarterly Indicator	Last	Prev.
BI 7 Day Rev Repo Rate	4.25%	4.25%	Real GDP	5.06%	4.25%
FX Reserve (USD bn)	130.20	125.97	Current Acc (USD bn)	(4.34)	129.40
Trd Balance (USD bn)	0.13	0.90	Govt Spending Yoy	3.46%	1.72
Exports Yoy	13.18%	18.39%	FDI (USD bn)	7.86	19.24%
Imports Yoy	19.62%	23.33%	Business Confidence	112.39	8.89%
Inflation Yoy	3.61%	3.30%	Cons. Confidence*	126.40	122.10

**ANTM** Last = 650

**Analysis** Gold price jumped to 4-month highest level after China's authority recommended the decrease in the U.S. bond purchase.

**Range** 635 – 710

**Action** Trading Buy. Cut Loss If Below 635



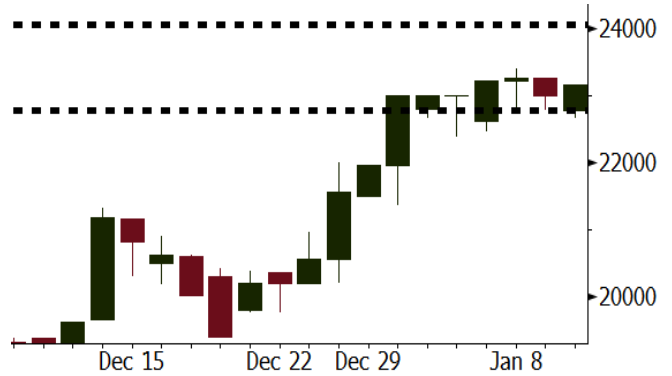
Source: Bloomberg

**INTP** Last = 23275

**Analysis** Cement sales volume in Indonesia starts to increase along with the acceleration of infrastructure project ahead of 2018 Asian Games.

**Range** 22775 – 24050

**Action** Trading Buy. Cut Loss If Below 22775



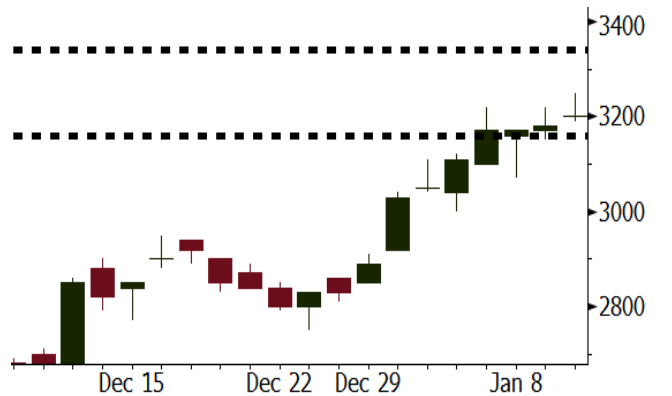
Source: Bloomberg

**INCO** Last = 3180

**Analysis** Global nickel price rallied to the highest position as of 2015 due to the China's regulation supporting hike in price.

**Range** 3160 - 3340

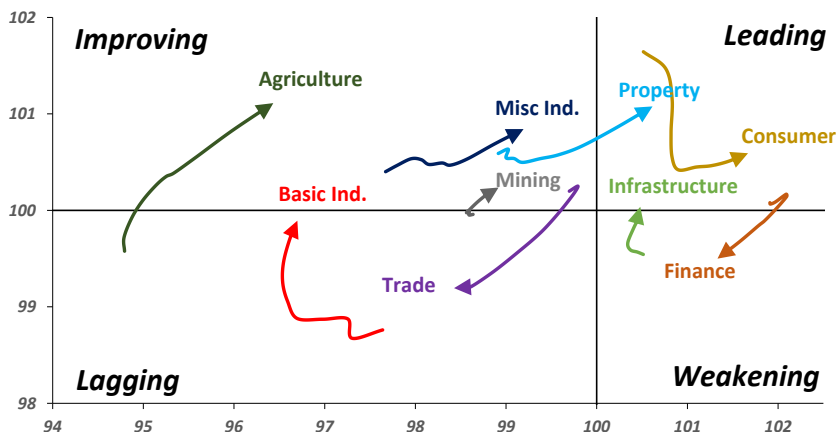
**Action** Trading buy. Cut Loss If Below 3160



Source: Bloomberg

## Sector Rotation

### Relative Rotation Graph - Last 10 Days



Source: Bloomberg

# Relative Valuation

	Last Price	End of Last Year Price	YTD Change (%)	1 Year Change (%)	Market Cap (IDR tn)	Price / BVPS	Price / EPS (TTM)	EV/ EBITDA (TTM)	Return on Equity (%)	EVA Spread (%)	Dividend Yield TTM (%)	Sales Growth Yoy (%)	EPS Growth Yoy (%)	Adjusted Beta
<b>JCI Index</b>			0.3	20.3	7,096.9									
<b>Finance</b>					2,091.9									
BBCA	22,450	21,900	2.5	46.7	553.5	4.3	24.8	N/A	18.9	4.5	0.9	8.6	14.3	0.9
BBRI	3,540	3,640	(2.7)	50.0	436.6	2.7	15.6	N/A	18.6	9.7	2.4	9.7	4.0	1.3
BMRI	7,925	8,000	(0.9)	39.3	369.8	2.3	21.9	N/A	10.8	0.2	1.7	6.5	(32.1)	1.4
BBNI	9,275	9,900	(6.3)	65.6	173.0	1.8	12.5	N/A	15.3	(1.0)	2.3	15.2	25.3	1.2
BDMN	6,900	6,950	(0.7)	87.0	66.1	1.7	20.8	N/A	8.6	(1.4)	1.4	(7.9)	11.5	1.4
BBTN	3,660	3,570	2.5	98.9	38.8	1.9	12.9	N/A	15.5	(2.7)	1.4	14.6	41.1	0.9
BJBR	2,230	2,400	(7.1)	(22.3)	21.6	2.2	20.4	N/A	10.9	(2.4)	4.0	5.6	(16.2)	0.7
BJTM	745	710	4.9	19.2	11.2	1.5	9.2	N/A	16.5	(0.0)	5.9	2.5	16.2	1.3
<b>Consumer</b>					1,607.8									
HMSP	4,860	4,730	2.7	23.0	565.3	18.3	43.5	31.6	42.2	24	2.2	7.2	18.2	1.3
UNVR	54,200	55,900	(3.0)	35.6	413.5	64.4	60.2	42.1	107.6	89.5	1.6	9.8	9.4	1.2
GGRM	83,000	83,800	(1.0)	31.4	159.7	4.0	21.3	13.0	19.4	1.0	3.1	8.4	3.7	1.2
ICBP	8,675	8,900	(2.5)	1.2	101.2	5.4	26.5	16.9	21.4	4.0	1.8	8.6	20.0	1.4
KLBF	1,740	1,690	3.0	12.6	81.6	6.4	34.3	22.8	19.8	3.3	1.3	8.3	14.7	1.1
INDF	7,800	7,625	2.3	(1.9)	68.5	2.2	17.0	8.6	14.1	(6.1)	3.0	4.2	52.7	1.2
ROTI	1,200	1,275	(5.9)	(28.6)	7.4	4.3	35.0	19.3	12.6	(1.7)	1.1	16.0	3.5	0.9
<b>Infrastructure</b>					810.92									
TLKM	4,200	4,440	(5.4)	6.5	423.4	4.6	18.5	7.0	25.9	10.2	4.7	13.5	24.4	1.2
PGAS	1,825	1,750	4.3	(34.8)	44.2	1.1	19.7	9.3	5.1	(6.0)	4.1	(4.4)	(23.5)	1.1
JSMR	6,300	6,400	(1.6)	47.5	45.7	3.1	18.1	12.4	19.1	(5.1)	1.2	69.2	28.7	1.0
EXCL	3,230	2,960	9.1	20.1	34.5	1.6	75.0	5.5	2.1	(7.2)	N/A	(6.7)	N/A	1.0
TBIG	6,650	6,425	3.5	31.7	30.1	17.6	25.4	15.4	76.3	3.0	2.2	8.5	(6.3)	0.7
<b>Trade</b>					756.0									
UNTR	36,900	35,400	4.2	69.3	137.6	3.1	18.3	9.2	18.2	1.6	1.8	(7.7)	29.8	1.1
LPPF	11,000	10,000	10.0	(28.2)	32.1	16.5	16.8	11.7	112.1	66.4	4.4	9.9	13.3	1.4
SCMA	2,420	2,480	(2.4)	(13.6)	35.4	8.3	24.5	16.9	35.3	18.0	2.4	6.8	(1.5)	0.8
AKRA	6,250	6,350	(1.6)	-	25.0	3.4	26.5	21.1	17.8	(5.5)	2.4	(23.0)	(3.0)	1.1
MNCN	1,360	1,285	5.8	(24.2)	19.4	2.0	16.5	8.1	11.7	(2.2)	3.1	4.4	17.4	1.2
ACES	1,260	1,155	9.1	64.7	21.6	6.5	28.2	20.3	24.8	9.1	1.3	4.1	20.8	0.9
BMTR	650	590	10.2	(0.8)	9.2	1.0	N/A	5.9	(0.5)	(3.7)	0.8	(1.1)	194.0	0.8
<b>Property</b>					424.7									
BSDE	1,665	1,700	(2.1)	(3.2)	32.0	1.4	10.9	10.9	13.8	(5.9)	0.3	5.0	(17.0)	1.2
LPKR	498	488	2.0	(35.7)	11.5	0.6	13.0	12.4	4.7	(7.9)	0.4	18.6	64.8	0.9
PWON	690	685	0.7	17.9	33.2	3.4	18.7	12.5	19.6	1.9	0.7	4.7	32.4	1.1
WSKT	2,520	2,210	14.0	(2.7)	34.2	2.7	9.3	12.7	28.9	(0.6)	1.5	68.1	63.5	0.9
SMRA	1,025	945	8.5	(22.6)	14.8	2.4	39.6	13.2	6.1	(3.4)	0.5	(4.0)	(63.6)	1.2
CTRA	1,195	1,185	0.8	(6.3)	22.2	1.7	22.2	15.1	8.7	(4.7)	0.4	(10.3)	(19.2)	0.9
PTPP	3,000	2,640	13.6	(19.1)	18.6	1.8	14.7	8.6	18.9	(2.9)	1.7	15.8	13.5	1.0
WIKA	1,780	1,550	14.8	(28.2)	16.0	1.4	11.0	8.2	15.8	(2.3)	1.9	15.0	68.3	0.7
ADHI	2,020	1,885	7.2	(9.0)	7.2	1.3	17.8	N/A	7.5	(3.4)	1.3	17.8	(65.8)	0.9
ASRI	382	356	7.3	2.1	7.5	0.9	N/A	N/A	N/A	(11.3)	0.4	(2.4)	(14.7)	1.0
APLN	222	210	5.7	(0.9)	4.6	0.5	5.8	5.4	9.7	1.8	0.9	0.6	(21.3)	0.8
<b>Misc Ind.</b>					407.7									
ASII	8,275	8,300	(0.3)	3.1	335.0	2.8	18.5	14.5	16.1	(6.0)	2.0	(1.7)	4.8	1.3
SRIL	382	380	0.5	66.1	7.8	1.4	8.5	6.7	18.1	3.4	0.8	9.3	6.7	0.7
<b>Basic Ind.</b>					524.9									
INTP	23,150	21,950	5.5	53.6	85.2	3.5	40.0	27.2	8.6	(9.9)	4.0	(13.7)	(11.2)	1.4
SMGR	10,825	9,900	9.3	22.3	64.2	2.2	21.0	16.4	10.9	(5.1)	2.8	(3.0)	0.0	1.1
CPIN	3,250	3,000	8.3	3.5	53.3	3.5	31.7	12.3	11.2	(1.4)	1.7	27.9	29.1	1.1
WTON	540	500	8.0	(35.3)	4.7	1.8	14.3	8.7	13.5	1.3	1.8	31.3	56.7	0.7
<b>Mining</b>					369.5									
ADRO	2,200	1,860	18.3	26.1	70.4	1.5	10.5	4.8	15.3	5.4	2.7	(6.0)	119.3	1.1
INCO	3,230	2,890	11.8	7.0	32.1	1.3	N/A	19.5	(0.6)	(12.4)	N/A	(26.0)	N/A	1.2
PTBA	2,720	2,460	10.6	12.4	31.3	2.3	8.0	5.2	32.2	10.5	2.1	2.4	1.2	1.1
ANTM	655	625	4.8	(25.1)	15.7	0.9	N/A	14.5	(1.7)	(6.9)	N/A	(13.5)	N/A	0.8
ITMG	23,850	20,700	15.2	53.4	26.9	2.0	8.4	3.6	N/A	16.1	10.2	(14.0)	100.0	0.6
<b>Agriculture</b>					103.5									
AALI	13,700	13,150	4.2	(19.4)	26.4	1.5	11.6	6.7	13.4	6.2	3.8	8.1	203.2	0.6
SSMS	1,425	1,500	(5.0)	4.0	13.6	3.5	14.5	10.2	27.0	3.1	1.3	14.8	9.2	0.7
LSIP	1,430	1,420	0.7	(17.1)	9.8	1.2	10.1	5.3	12.5	(0.1)	2.4	(8.2)	(4.4)	0.8

Source: Bloomberg

**ACST : Targets New Contract of IDR10 Trillion**

ACST targets 2018's new contract of IDR10 trillion increasing 19% than 2017's realization of IDR8.4 trillion. ACST's 2017 new contract realization is higher than the new contract target of IDR7.5 trillion. (Bisnis Indonesia)

**WIKA : Wins Train Line Bid in Myanmar**

WIKA won the bid of train line construction project in Myanmar, and stated that the amount of the project is equal to IDR250 billion. Besides, it is participating in residential project in Dubai and Myanmar. (Kontan)

**MTLA : Adds Landbank of 200Ha**

MTLA plans to add landbank of 100-200ha in 2018. The 2018's total capex is IDR600 billion and it will focus on constructing residency and apartment. (Kontan)

**BUMI : Obtains Receivables of USD367.5 Million**

BUMI has receivables of USD367.5 million stemming from PT Tiga Lima Rekso. It stated that the receivables settlement is expected to be conducted in 1H18 and is certain that all receivables can be paid; accordingly the post for reduction in receivables value in the financial statements should not be made. (Kontan)

## Domestic & Global News

---

**Bappebti Opens Chance of Bitcoin Transaction**

Commodity Futures Trading Regulatory Agency (Bappebti) opens the chance of bitcoin crypto currency trading in Indonesia. The discussion between commodity derivative market and Indonesia's Clearing House is planned to be conducted in January. The result of the discussion will be used as the reference for Bank Indonesia and Financial Service Authority (OJK) to approve the bitcoin trading.

**China Is Reportedly Thinking of Halting US Treasury Purchases**

China, the biggest buyer of U.S. sovereign bonds, could be slowing down or even halting its purchases, according to a report. Bloomberg News reported Wednesday, citing people familiar with the matter, that officials in Beijing have recommended the Chinese government lower — or even stop — its buying of U.S. sovereign debt. The report also notes that Chinese officials think U.S. debt is becoming less attractive compared with other assets, adding that trade tensions between the two countries could provide a reason to slow down or halt the purchases. (CNBC)

Date	Country	Hour Jakarta	Event	Period	Actual	Consensus	Previous
<b>Monday</b> 08 - Jan	GER	14:00	Factory Orders MoM	Dec	-0.40%	--	0.50%
	EU	17:00	Consumer Confidence	Dec F	0.50%	--	0.5
<b>Tuesday</b> 09 - Jan	GER	14:00	Industrial Production SA MoM	Nov	3.40%	--	-1.40%
	EU	17:00	Unemployment Rate	Nov	8.70%	--	8.80%
<b>Wed.</b> 10 - Jan	CHN	08:30	PPI YoY	Dec	4.90%	4.80%	5.80%
	CHN	08:30	CPI YoY	Dec	1.80%	1.90%	1.70%
	UK	16:30	Industrial Production MoM	Nov	0.40%	0.40%	0.00%
	UK	16:30	Industrial Production YoY	Nov	2.50%	1.80%	3.60%
	UK	16:30	Manufacturing Production MoM	Nov	0.40%	0.30%	0.10%
	UK	16:30	Trade Balance	Nov	-£2804	-£1500	-£1405
	USA	19:00	MBA Mortgage Applications	5-Jan	8.30%	--	0.70%
	USA	20:30	Import Price Index MoM	Dec	0.10%	0.40%	0.70%
	USA	22:00	Wholesale Inventories MoM	Nov F	0.80%	--	0.70%
<b>Thursday</b> 11 - Jan	USA	20:30	PPI Final Demand MoM	Dec		0.20%	0.40%
	USA	20:30	Initial Jobless Claims	6-Jan		--	250k
<b>Friday</b> 12 - Jan	USA	02:00	Monthly Budget Statement	Dec		-\$49.0b	-\$138.5b
	JPN	06:50	BoP Current Account Balance	Nov		¥1836.1b	¥2176.4b
	JPN	06:50	Trade Balance BoP Basis	Nov		¥314.1b	¥430.2b
	JPN	06:50	Japan Buying Foreign Bonds	5-Jan		--	¥434.2b
	USA	20:30	CPI MoM	Dec		0.20%	0.40%
	CHN	Tentative	Trade Balance	Dec		\$37.44b	\$40.21b
	CHN	Tentative	Imports YoY	Dec		14.80%	17.70%
CHN	Tentative	Exports YoY	Dec		10.00%	12.30%	

Source: Bloomberg

## Domestic Economic Calendar

Date	Hour Jakarta	Event	Period	Actual	Consensus	Prev.
<b>Monday</b>	Tentative	Foreign Reserves	Dec	\$130.20b	--	\$125.97b
08 - Jan	Tentative	Net Foreign Assets IDR	Dec	1727.9t	--	1666.5t

*Source: Bloomberg*

## Corporate Calendar

Date	Event	Company
<b>Monday</b>	Right Delisting	BSWD
08 - Jan	Right Offering	TMPO, CASA
<b>Tuesday</b>	Extraordinary Shareholders Meeting	MBAP
09 - Jan		
<b>Wednesday</b>	Extraordinary Shareholders Meeting	BYAN, EMTK, MDRN, BBKP, ENRG
10 - Jan		
<b>Thursday</b>	Right Listing	IKAI
11 - Jan		
<b>Friday</b>	Right Listing	CASA, TMPO
12 - Jan		

*Source: Bloomberg*

### DISCLAIMER

This report and any electronic access hereto are restricted and intended only for the clients and related entity of PT NH Korindo Sekuritas Indonesia. This report is only for information and recipient use. It is not reproduced, copied, or made available for others. Under no circumstances is it considered as a selling offer or solicitation of securities buying. Any recommendation contained herein may not suitable for all investors. Although the information here is obtained from reliable sources, its accuracy and completeness cannot be guaranteed. PT NH Korindo Sekuritas Indonesia, its affiliated companies, respective employees, and agents disclaim any responsibility and liability for claims, proceedings, action, losses, expenses, damages, or costs filed against or suffered by any person as a result of acting pursuant to the contents hereof. Neither is PT NH Korindo Sekuritas Indonesia, its affiliated companies, employees, nor agents liable for errors, omissions, misstatements, negligence, inaccuracy arising herefrom.

All rights reserved by PT NH Korindo Sekuritas Indonesia



## PT. NH Korindo Sekuritas Indonesia

Member of Indonesia Stock Exchange

**Head Office :**

Wisma Korindo 7<sup>th</sup> Floor  
Jl. M.T. Haryono Kav. 62  
Pancoran, Jakarta 12780  
Indonesia  
Telp: +62 21 7976202  
Fax : +62 21 7976206

**Branch Office BSD:**

ITC BSD Blok R No.48  
Jl. Pahlawan Seribu Serpong  
Tangerang Selatan 15322  
Indonesia  
Telp : +62 21 5316 2049  
Fax : +62 21 5316 1687

**Branch Office Solo :**

Jl. Ronggowarsito No. 8  
Kota Surakarta  
Jawa Tengah 57111  
Indonesia  
Telp: +62 271 664763  
Fax : +62 271 661623

### A Member of NH Investment & Securities Global Network

Seoul | New York | Hong Kong | Singapore | Shanghai | Beijing | Hanoi |  
Jakarta