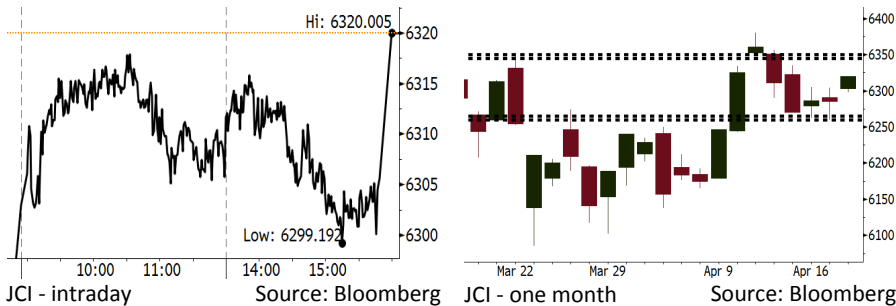


Morning Brief

Daily | Apr 19, 2018

JCI Movement



IHSG (Jakarta Composite Index)

Apr 18	6,320.01
Chg	+34.24pts (+0.54%)
Volume (bn shares)	93.34
Value (IDR tn)	7.18

Adv 164 Dec 207 Unc 216 Untr 105

Foreign Transaction (IDR bn)

Buy	2,330
Sell	2,554
Net Buy (Sell)	(224)

Top Buy	NB Val.	Top Sell	NS Val.
INKP	2	BMRI	156.2
TLKM	36.5	INDF	53.3
ASII	33.5	BBRI	47.0
INKP	18.5	PGAS	46.7
BUMI	16.5	UNVR	42.4

LQ-45 Index Top Gainers & Losers

Gainers	%	Losers	%
INCO	3.7%	TRAM	-6.1%
GGRM	2.7%	EXCL	-3.8%
AKRA	2.7%	SRIL	-3.5%
ADHI	2.4%	KLBF	-2.2%
BSDE	2.2%	BBNI	-2.0%

Government Bond Yield & FX

	Last	Chg.
Tenor: 10 year	6.64%	0.02%
USDIDR	13,776	0.07%
KRWIDR	12.91	0.16%

Global Indexes

Index	Last	Chg.	%
Dow Jones	24,748.07	(38.56)	-0.16%
S&P 500	2,708.64	2.25	0.08%
Nasdaq	7,295.24	14.14	0.19%
FTSE 100	7,317.34	91.29	1.26%
CAC 40	5,380.17	26.63	0.50%
DAX	12,590.83	5.26	0.04%
Nikkei	22,158.20	310.61	1.42%
Hang Seng	30,284.25	221.50	0.74%
Shanghai	3,091.40	24.60	0.80%
KOSPI	2,479.98	26.21	1.07%
EIDO	27.63	0.16	0.58%

Commodities

Commodity	Last	Chg.	%
Gold (USD /troy oz.)	1,347.5	1.6	0.12%
Crude Oil (USD /bbl)	66.52	0.30	0.45%
Coal Newcas(USD/ton)	90.25	(1.20)	-1.31%
Gas (USD /mmbtu)	2.74	(0.01)	-0.51%
Nickel LME (USD /MT)	14,215	(120.0)	-0.84%
Tin LME (USD /MT)	21,475	450.0	2.14%
CPO (MYR/Ton)	2,408	39.0	1.65%

Indonesian Market Recap

JCI rallied yesterday, it followed the rebound in the regional markets. Meanwhile, investors digested a positive sentiment from the U.S. markets. **Top Gainers: Basic Ind (+1.88%), Finance (+0.91%), Manufaktur (+0.61%).**

Today's Outlook: IMF Warning

Today we estimate JCI to lower with the support range of 6260-6265 and resistance range of 6345-6350 and resistance range of 6345-6350. The negative sentiment derives from the IMF report showing the global debt currently hitting the highest record of USD164 trillion (+225%) from 2016 global debt. The global debt in the emerging markets reached virtually 50% of GDP. Compared to the prior backdrop, the current backdrop is a crisis.

Stocks Recommendation (details on the next page)

Trading Buy: PTBA, TINS, ANTM

Global Market

United States

The U.S. markets rallied last night as it was backed by the positive sentiment deriving from the release of big-cap companies' performance.

Europe

European markets rallied yesterday. The rally in commodities shares constituted as a positive sentiment for investors.

Asia

Asia markets rallied yesterday. Investors digested a positive sentiment from the U.S. markets.

Company News

- UNTR: Will Distribute Dividend of IDR611 Per Share
- ASII: Predicts Automotive Market Shares to Be Stagnant
- KRAS: Posts Growth in 1Q18 Sales Volume
- MLBI: Will Distribute Dividend of IDR487 Per Share

Domestic & Global News

- Further Surplus Optimism
- IMF Warns of Rising Threats to Global Financial System

Indonesia Economic Data

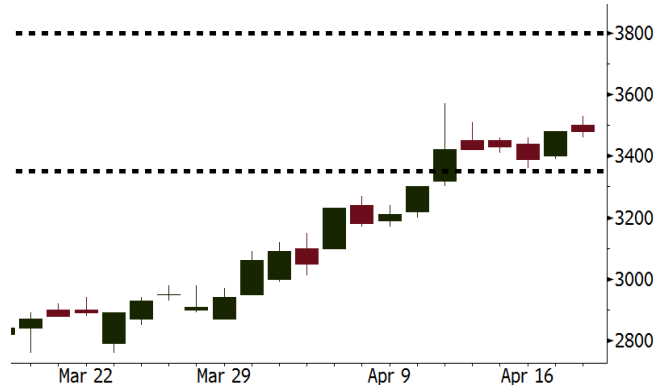
Monthly Indicator	Last	Prev.	Quarterly Indicator	Last	Prev.
BI 7 Day Rev Repo Rate	4.25%	4.25%	Real GDP	5.19%	5.06%
FX Reserve (USD bn)	126.00	128.06	Current Acc (USD bn)	(5.76)	(5.80)
Trd Balance (USD bn)	1.09	(0.12)	Govt Spending Yoy	3.81%	3.46%
Exports Yoy	6.14%	11.76%	FDI (USD bn)	4.62	7.86
Imports Yoy	9.07%	25.18%	Business Confidence	111.02	112.39
Inflation Yoy	3.40%	3.18%	Cons. Confidence*	121.60	122.50

PTBA Last = 3480

Analysis Today PTBA releases 1Q18 performance. Based on the current development of coal industry, 1Q18 performance is estimated to be better than 1Q17 performance.

Range 3350 - 3800

Action Trading Buy. Cut Loss If Below 3350



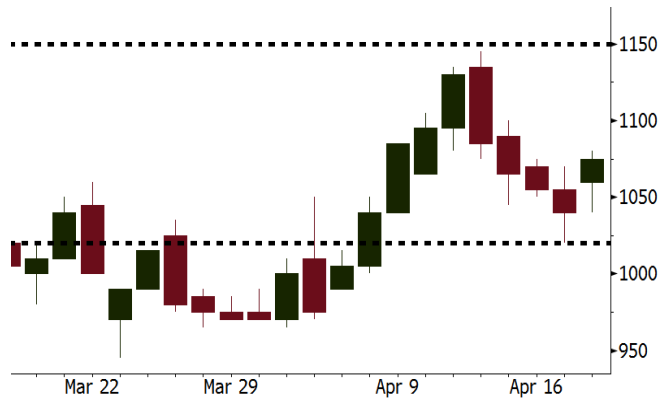
Source: Bloomberg

TINS Last = 1075

Analysis Global tin prices edged up by 2.14% yesterday. Investors showed concerns about the current decline in global tin supply.

Range 1020 – 1150

Action Trading Buy. Cut Loss If Below 1020



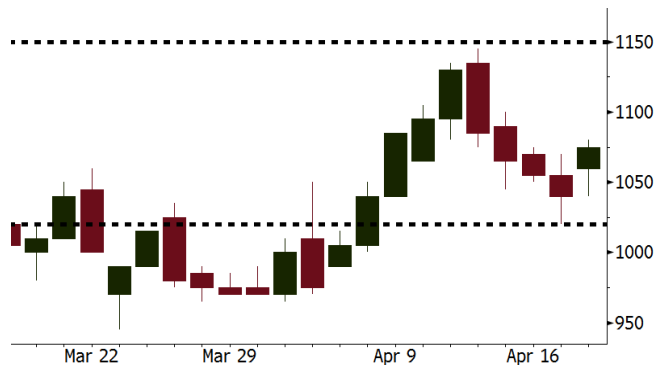
Source: Bloomberg

ANTM Last = 885

Analysis IMF warning of the current global financial conditions can be a positive sentiment for the global gold as the safe haven investment.

Range 855 - 930

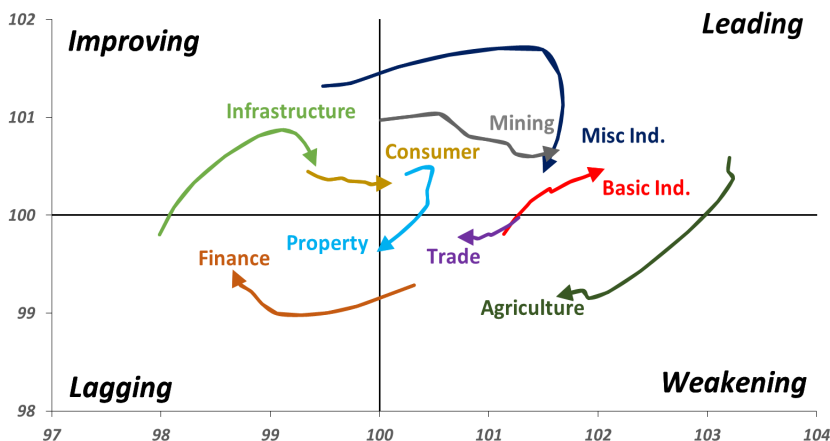
Action Trading buy. Cut Loss If Below 855



Source: Bloomberg

Sector Rotation

Relative Rotation Graph - Last 10 Days



Source: Bloomberg

Relative Valuation

	Last Price	End of Last Year Price	Target Price*	Rating	Upside Potential (%)	1 Year Change (%)	Market Cap (IDR tn)	Price / EPS (TTM)	Price / BVPS	Return on Equity (%)	Dividend Yield TTM (%)	Sales Growth Yoy (%)	EPS Growth Yoy (%)	Adjusted Beta
JCI Index						12.8	7,060.1							
Finance						31.1	2,129.1							
BBCA	23,100	21,900	24,950	Hold	8.0	36.5	569.5	24.4x	4.3x	19.1	1.1	7.2	13.1	0.9
BBRI	3,660	3,640	4,700	Buy	28.4	42.1	451.4	15.4x	2.7x	18.5	2.9	10.2	10.7	1.3
BMRI	8,050	8,000	10,300	Buy	28.0	37.0	375.7	18.2x	2.3x	13.0	2.5	5.9	49.5	1.3
BBNI	8,775	9,900	10,825	Buy	23.4	38.2	163.6	12.0x	1.7x	14.7	2.9	11.2	19.7	1.3
BBTN	3,600	3,570	3,790	Hold	5.3	57.2	38.1	12.6x	1.8x	14.8	1.6	13.3	15.8	0.9
BJTM	685	710	810	Buy	18.2	2.2	10.3	8.8x	1.3x	15.4	6.4	0.6	12.5	1.4
Consumer						8.6	1,487.6							
HMSP	4,120	4,730	5,025	Buy	22.0	4.3	479.2	37.9x	14.0x	37.1	2.6	3.8	(0.9)	1.2
GGRM	76,875	83,800	97,825	Buy	27.3	18.5	147.9	19.1x	3.5x	19.0	3.4	9.2	16.1	1.3
UNVR	51,575	55,900	49,450	Hold	(4.1)	13.9	393.5	56.2x	76.1x	141.8	1.7	2.9	9.5	1.0
ICBP	8,325	8,900	9,625	Buy	15.6	1.5	97.1	25.5x	5.0x	20.5	1.8	3.6	5.5	1.2
INDF	7,050	7,625	8,000	Hold	13.5	(11.3)	61.9	14.9x	2.0x	13.9	3.3	5.3	9.7	1.1
KLBF	1,560	1,690	2,020	Buy	29.5	0.6	73.1	30.4x	5.5x	19.1	1.4	4.2	4.5	1.2
KAEF	2,190	2,700	3,280	Buy	49.8	(5.2)	12.2	37.2x	4.8x	13.8	0.4	5.4	22.2	1.4
Infrastructure						(1.7)	748.31							
TLKM	3,750	4,440	4,600	Buy	22.7	(7.5)	378.0	16.8x	4.0x	25.0	5.2	10.2	13.9	1.1
EXCL	2,520	2,960	3,800	Buy	50.8	(16.0)	26.9	72.5x	1.2x	1.8	N/A	7.2	(7.9)	1.0
ISAT	4,640	4,800	6,750	Buy	45.5	(35.1)	25.2	22.2x	1.8x	8.3	1.5	2.5	2.8	0.6
JSMR	4,560	6,400	6,050	Buy	32.7	(2.4)	33.1	15.0x	2.2x	15.3	1.3	110.6	9.5	1.0
TBIG	5,500	6,425	6,050	Hold	10.0	(8.3)	24.9	10.6x	7.9x	99.8	2.7	8.4	229.7	0.7
INDY	3,620	3,060	5,050	Buy	39.5	417.1	18.9	4.1x	1.5x	44.3	N/A	41.7	N/A	1.1
Trade						2.0	767.3							
UNTR	36,800	35,400	42,350	Buy	15.1	32.1	137.3	18.5x	3.0x	17.2	1.8	41.8	48.0	1.3
AKRA	5,700	6,350	8,025	Buy	40.8	(13.0)	22.9	25.2x	3.0x	16.7	2.6	20.2	(11.3)	1.0
SCMA	2,630	2,480	3,200	Buy	21.7	(5.7)	38.5	28.9x	9.9x	36.3	2.2	(1.6)	(11.4)	0.7
MNCN	1,395	1,285	1,500	Hold	7.5	(18.9)	19.9	12.8x	2.0x	16.3	3.0	4.8	10.3	1.0
LPPF	10,400	10,000	13,750	Buy	32.2	(22.2)	30.3	15.9x	13.0x	91.2	4.7	1.3	(5.5)	1.2
ACES	1,340	1,155	1,575	Buy	17.5	47.3	23.0	29.4x	6.5x	23.7	1.2	20.3	9.4	0.9
RAIS	1,440	1,200	1,450	Hold	0.7	24.1	10.2	23.8x	2.8x	11.9	2.5	(4.0)	0.8	1.0
MAPI	8,175	6,200	9,450	Buy	15.6	31.9	13.6	40.2x	3.4x	9.5	0.3	15.2	60.3	1.0
Property						(0.0)	425.8							
BSDE	1,830	1,700	1,850	Hold	1.1	0.5	35.2	7.1x	1.4x	21.4	0.3	56.7	172.3	1.1
PWON	625	685	700	Hold	12.0	5.9	30.1	16.1x	2.9x	19.7	0.7	18.1	12.1	1.0
CTRA	1,240	1,185	1,440	Buy	16.1	(2.0)	23.0	25.5x	1.7x	6.9	0.4	(4.4)	(12.7)	1.0
SMRA	1,025	945	1,160	Hold	13.2	(24.9)	14.8	40.8x	2.3x	5.7	0.5	4.5	16.2	1.3
WSKT	2,370	2,210	2,810	Buy	18.6	(2.9)	32.2	5.7x	2.3x	31.0	2.4	90.1	126.5	1.1
PTPP	2,800	2,640	3,850	Buy	37.5	(16.7)	17.4	11.9x	1.5x	13.8	1.8	30.6	13.6	1.3
WIKA	1,690	1,550	2,150	Buy	27.2	(29.3)	15.2	12.6x	1.0x	8.2	2.0	67.1	(17.3)	1.0
ADHI	2,150	1,885	2,160	Hold	0.5	(6.1)	7.7	14.9x	1.3x	9.1	1.2	37.0	64.4	1.0
Misc Ind.						(9.3)	380.6							
ASII	7,525	8,300	9,300	Buy	23.6	(10.1)	304.6	16.1x	2.5x	16.0	2.2	13.8	24.6	1.4
Basic Ind.						30.6	601.0							
INTP	18,800	21,950	21,575	Hold	14.8	13.9	69.2	37.2x	2.8x	7.3	4.9	(6.1)	(51.9)	1.5
SMGR	9,875	9,900	11,550	Buy	17.0	12.9	58.6	29.1x	2.0x	7.0	3.1	6.4	(55.4)	1.3
CPIN	3,720	3,000	4,160	Hold	11.8	16.3	61.0	24.4x	3.9x	16.8	1.5	29.0	10.9	1.2
JPFA	1,560	1,300	1,820	Buy	16.7	0.3	17.8	17.8x	1.9x	11.0	3.2	9.4	(53.4)	0.9
MAIN	810	740	780	Hold	(3.7)	(35.7)	1.8	37.1x	1.1x	2.8	4.7	3.9	(76.8)	1.1
KRAS	474	424	500	Hold	5.5	(20.3)	9.2	N/A	0.4x	(4.4)	N/A	7.8	58.0	1.2
TPIA	6,400	6,000	6,275	Hold	(2.0)	22.8	114.1	25.0x	5.0x	22.8	2.0	25.3	3.8	0.7
BRPT	2,480	2,260	2,420	Hold	(2.4)	45.9	34.6	24.2x	2.3x	12.4	N/A	25.1	(5.3)	0.3
Mining						24.9	411.3							
ADRO	2,120	1,860	2,720	Buy	28.3	15.5	67.8	10.2x	1.4x	14.6	2.8	29.1	44.5	1.1
PTBA	3,240	2,460	4,085	Buy	26.1	28.6	37.3	6.7x	2.5x	37.3	9.8	26.4	67.1	1.3
ITMG	26,925	20,700	31,125	Buy	15.6	34.1	30.4	8.5x	2.2x	27.1	11.7	23.5	91.7	0.9
INCO	3,500	2,890	3,550	Hold	1.4	59.1	34.8	N/A	1.4x	(0.8)	N/A	7.7	N/A	1.5
ANTM	900	625	990	Hold	10.0	26.8	21.6	158.3x	1.2x	0.7	N/A	39.0	89.3	1.0
TINS	1,075	775	1,240	Buy	15.3	12.6	8.0	15.7x	1.3x	8.6	0.9	32.3	79.9	1.1
ELSA	488	372	625	Buy	28.1	22.6	3.6	16.3x	1.2x	7.8	0.9	37.5	(20.5)	1.1
Agriculture						(6.8)	109.2							
AAII	13,550	13,150	18,375	Buy	35.6	(7.8)	26.1	13.0x	1.4x	11.4	3.5	22.5	(8.0)	0.6
LSIP	1,330	1,420	1,800	Buy	35.3	(4.3)	9.1	11.9x	1.1x	9.7	2.6	23.1	28.7	0.8

* Target Price for December 2018

Source: Bloomberg, NHKS Research

UNTR: Will Distribute Dividend of IDR611 Per Share

UNTR will distribute the cash dividend of IDR611 per share from 2017 profit. The cash dividend will be received by shareholders on May 15, 2018. It set April 23, 2018 as the cum dividend date in regular markets and negotiation date and April 26, 2018 as the recording date. In the closing session, its shares are at the level of IDR36,800 per share reflecting the dividend yield of 1.66%. (Kontan)

KRAS: Posts Growth in 1Q18 Sales Volume

KRAS posted the average sales volume of 200,000 tons per month (+33% y-y) in 1Q18. However, the figures were still below the targeted sales of 215,000 tons per month. In 1Q18, it set long-term cooperation to supply hot rolled coils of 15,000 tons per month to PT Essar Indonesia and cold rolled sheets of 24,000 tons to PT Pertamina. (Bisnis Indonesia)

ASII: Predicts Automotive Market Shares to Be Stagnant

ASII predicted that the market share of automotive segment in 2018 will be stagnant. It states that the competition with new brands and the hike in commodities prices increasing the demand for commercial vehicles cause the stagnant backdrop. However, ASII will offer interesting promotion and improve post-selling services with a view to maintain the market share at the level of 50%. (Bisnis Indonesia)

MLBI: Will Distribute Dividend of IDR487 Per Share

MLBI will distribute the cash dividend of IDR498 per share. It set April 24, 2018 as the cum dividend date and April 27, 2018 as the recording date. The shareholders will receive the cash dividend on May 18, 2018. In the closing session, its shares were at IDR17,000 per share reflecting the dividend yield of 2.86%. (Kontan)

Domestic & Global News

Further Surplus Optimism

The global market demand for Indonesia's non-oil and gas products amid the issue of the trade war between the U.S. and China is estimated to boost the national export performance.

IMF Warns of Rising Threats to Global Financial System

Threats to the global financial system are rising, with the price of risky assets surging in a manner reminiscent of the years before the global financial crisis, the International Monetary Fund warned. Downside risks to world financial stability have increased "somewhat" over the past six months, the IMF said Wednesday in the latest edition of its Global Financial Stability Report. "Financial vulnerabilities, which have accumulated during years of extremely low rates and volatility, could make the road ahead bumpy and could put growth at risk," said the Washington-based fund.

Date	Country	Hour Jakarta	Event	Period	Actual	Consensus	Previous
Monday	USA	19:30	Empire Manufacturing	Apr	15.8	19.6	22.5
16 - Apr	USA	19:30	Retail Sales Advance MoM	Mar	0.60%	0.40%	-0.10%
Tuesday	CHN	09:00	GDP YoY	1Q	6.80%	6.80%	6.80%
17 - Apr	CHN	09:00	Retail Sales YoY	Mar	10.10%	9.70%	9.40%
	CHN	09:00	Industrial Production YoY	Mar	6.00%	6.40%	6.20%
	JPN	11:30	Industrial Production MoM	Feb F	0.00%	--	4.10%
	UK	15:30	Claimant Count Rate	Mar	2.40%	--	2.40%
	UK	15:30	Jobless Claims Change	Mar	11.6k	--	9.2k
	UK	15:30	ILO Unemployment Rate 3Mths	Feb	4.20%	4.30%	4.30%
	GER	16:00	ZEW Survey Current Situation	Apr	87.9	86	90.7
	GER	16:00	ZEW Survey Expectations	Apr	-8.2	-1.5	5.1
	USA	19:30	Housing Starts	Mar	1319k	1269k	1236k
	USA	20:15	Industrial Production MoM	Mar	0.51%	0.30%	1.10%
Wednesday	UK	15:30	CPI YoY	Mar	2.50%	2.70%	2.70%
18 - Apr	EU	16:00	CPI YoY	Mar F	1.30%	1.40%	1.40%
Thursday	USA	01:00	U.S. Federal Reserve Releases Beige Book				
19 - Apr							
Friday	JPN	06:30	Natl CPI YoY	Mar		1.10%	1.50%
20 - Apr	EU	21:00	Consumer Confidence	Apr A		-0.1	0.1

Source: Bloomberg

Domestic Economic Calendar

Date	Hour Jakarta	Event	Period	Actual	Consensus	Prev.
Monday	11:00	Imports YoY	Mar	9.07%	11.70%	25.18%
16 - Apr	11:00	Exports YoY	Mar	6.14%	1.95%	11.76%
	11:00	Trade Balance	Mar	\$1091.7m	\$224m	-\$116m
Friday	Tentative	Bank Indonesia 7D Reverse Repo	19-Apr		4.25%	4.25%
20 - Apr						

Source: Bloomberg

Corporate Calendar

Date	Event	Company
Monday	Annual Shareholder Meeting	PTRO, TINS, UNTR
16 - Apr	Cum Dividend Date	JASS (IDR59 per share)
Tuesday	Annual Shareholder Meeting	MLBI, PANS, PPRO
17 - Apr	Annual & Extraordinary Shareholder Meeting	BFIN
	Cum Dividend Date	AALI (IDR322 per share)
		JSMR (IDR60.6 per share)
Wednesday	Annual Shareholder Meeting	KRAS
18 - Apr		
Thursday	Annual Shareholder Meeting	INAF, KAEF, LEAD, MFMI, POWR, TURI
19 - Apr	Extraordinary Shareholder Meeting	DGIK
Friday	Annual Shareholder Meeting	ADMF, ATIC, BSSR, KBLV, MLIA, PBSA
20 - Apr	Annual & Extraordinary Shareholder Meeting	DILD

Source: Bloomberg

DISCLAIMER

This report and any electronic access hereto are restricted and intended only for the clients and related entities of PT NH Korindo Sekuritas Indonesia. This report is only for information and recipient use. It is not reproduced, copied, or made available for others. Under no circumstances is it considered as a selling offer or solicitation of securities buying. Any recommendation contained herein may not suitable for all investors. Although the information hereof is obtained from reliable sources, its accuracy and completeness cannot be guaranteed. PT NH Korindo Sekuritas Indonesia, its affiliated companies, employees, and agents are held harmless from any responsibility and liability for claims, proceedings, action, losses, expenses, damages, or costs filed against or suffered by any person as a result of acting pursuant to the contents hereof. Neither is PT NH Korindo Sekuritas Indonesia, its affiliated companies, employees, nor agents are liable for errors, omissions, misstatements, negligence, inaccuracy contained herein.

All rights reserved by PT NH Korindo Sekuritas Indonesia



PT. NH Korindo Sekuritas Indonesia

Member of Indonesia Stock Exchange

Head Office :

Wisma Korindo 7th Floor
Jl. M.T. Haryono Kav. 62
Pancoran, Jakarta 12780
Indonesia
Telp: +62 21 7976202
Fax : +62 21 7976206

Branch Office BSD:

ITC BSD Blok R No.48
Jl. Pahlawan Seribu Serpong
Tangerang Selatan 15322
Indonesia
Telp : +62 21 5316 2049
Fax : +62 21 5316 1687

Branch Office Solo :

Jl. Ronggowarsito No. 8
Kota Surakarta
Jawa Tengah 57111
Indonesia
Telp: +62 271 664763
Fax : +62 271 661623

A Member of NH Investment & Securities Global Network

Seoul | New York | Hong Kong | Singapore | Shanghai | Beijing | Hanoi |
Jakarta