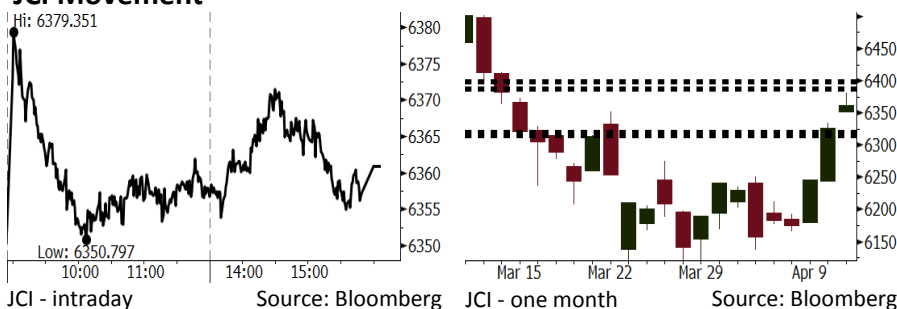


Morning Brief

Daily | Apr 12, 2018

JCI Movement



IHSG (Jakarta Composite Index)

Apr 11	6,360.93
Chg	+35.11pts (+0.56%)
Volume (bn shares)	90.91
Value (IDR tn)	7.72

Adv 176 Dec 209 Unc 202 Untr 104

Foreign Transaction (IDR bn)

Buy	2,599
Sell	2,719
Net Buy (Sell)	(121)

Top Buy	NB Val.	Top Sell	NS Val.
BBRI	112.4	PTBA	73.2
TLKM	52.1	ADRO	51.8
BMRI	36.8	HMSF	34.9
INKP	20.3	UNTR	31.5
INTP	17.2	INDF	31.1

LQ-45 Index Top Gainers & Losers

Gainers	%	Losers	%
BMTR	6.8%	PWON	-3.1%
EXCL	6.2%	BSDE	-2.0%
GGRM	4.5%	LPPF	-1.3%
BMRI	4.0%	MYRX	-1.3%
UNTR	3.4%	TRAM	-1.0%

Government Bond Yield & FX

	Last	Chg.
Tenor: 10 year	6.56%	-0.04%
USDIDR	13,759	0.06%
KRWIDR	12.89	0.00%

Global Indexes

Index	Last	Chg.	%
Dow Jones	24,189.45	(218.55)	-0.90%
S&P 500	2,642.19	(14.68)	-0.55%
Nasdaq	7,069.03	(25.27)	-0.36%
FTSE 100	7,257.14	(9.61)	-0.13%
CAC 40	5,277.94	(29.62)	-0.56%
DAX	12,293.97	(103.35)	-0.83%
Nikkei	21,687.10	(107.22)	-0.49%
Hang Seng	30,897.71	168.97	0.55%
Shanghai	3,208.08	17.76	0.56%
KOSPI	2,444.22	(6.52)	-0.27%
EIDO	27.93	0.19	0.68%

Commodities

Commodity	Last	Chg.	%
Gold (USD /troy oz.)	1,353.4	13.7	1.03%
Crude Oil (USD /bbl)	66.82	1.31	2.00%
Coal Newcas(USD/ton)	92.15	(0.75)	-0.81%
Gas (USD /mmbtu)	2.68	0.02	0.72%
Nickel LME (USD /MT)	13,865	170.0	1.24%
CPO (MYR/Ton)	2,431	(2.0)	-0.08%

Indonesian Market Recap

JCI rallied yesterday. Stated-owned miners soared after the announcement of higher dividend value. **Top Gainers: Miscellaneous Industries (+1.28%), Basic Industry (+1.13%), Trade (+0.80%).**

Today's Outlook: The U.S. Missile Threat

We estimate JCI to be bearish with the **support range of 6315-6320 and resistance range of 6388-6398**. Trump's tweet of firing missiles at Syria is major negative sentiment. The attack is response to Russia's support of Assad. This turmoil is estimated to heighten the geopolitical tension between the U.S.–Russia. In light of this backdrop, it is suggested that investors focus on mining sector.

Stocks Recommendation (details on the next page)

Trading Buy: ANTM, ELSA, INDY

Global Market

United States

The U.S. markets were sluggish last night due to Trump's hard-hitting threat of attacking Syria.

Europe

European markets closed lower yesterday while investors focused on the release agenda for company's financial performance.

Asia

Asia markets moved mixed yesterday while a number of markets moved lower underlined by investors' least enthusiasm resulting in profit taking.

Company News

ACST	: Distributes Cash Dividend of IDR40.6 Billion
PPRE	: Secures Contracts of IDR24 Trillion
PTBA	: Targets Coal Sales Volume of 25.88 Million Ton
ASGR	: Targets Growth of 9% in 1Q18 Revenue

Domestic & Global News

Former General to Take on Widodo in Indonesia Presidential Race
Trump tweets Russia: 'Get ready' for missiles fired at Syria

Indonesia Economic Data

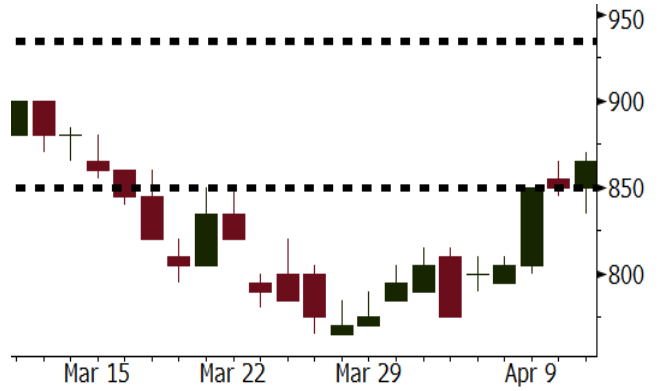
Monthly Indicator	Last	Prev.	Quarterly Indicator	Last	Prev.
BI 7 Day Rev Repo Rate	4.25%	4.25%	Real GDP	5.19%	5.06%
FX Reserve (USD bn)	126.00	128.06	Current Acc (USD bn)	(5.76)	(5.80)
Trd Balance (USD bn)	(0.12)	(0.68)	Govt Spending Yoy	3.81%	3.46%
Exports Yoy	11.76%	7.86%	FDI (USD bn)	4.62	7.86
Imports Yoy	25.18%	26.44%	Business Confidence	111.02	112.39
Inflation Yoy	3.40%	3.18%	Cons. Confidence*	121.60	122.50

ANTM Last = 865

Analysis ANTM succeeded to post 1Q18 gold sales volume of 6,945 kg. The achievement soared by 226% as opposed to 1Q17 sales volume of 2,128 kg edging up 11% compared to 4Q17 sales volume of 6,236 kg.

Range 850 - 935

Action Trading Buy. Cut Loss If Below 850



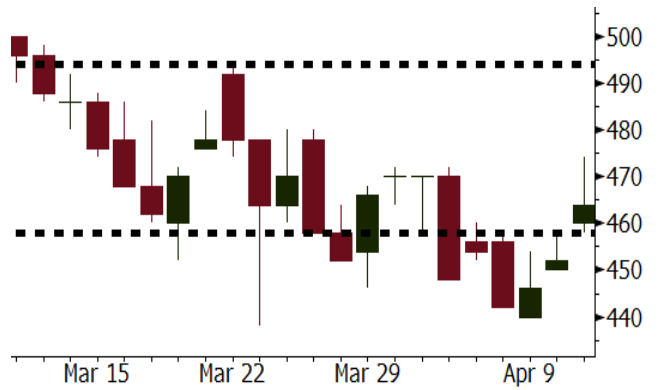
Source: Bloomberg

ELSA Last = 464

Analysis Global oil price rallied further ignited by the heightened geopolitical tension between the U.S. and Russia and Trump's threat of firing missile on Syria.

Range 458 - 494

Action Trading Buy. Cut Loss If Below 458



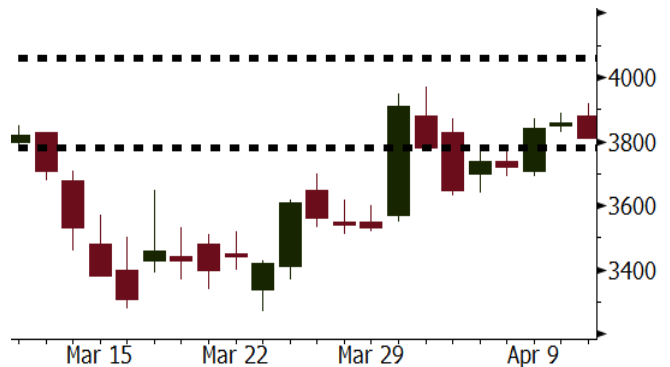
Source: Bloomberg

INDY Last = 3810

Analysis Stated-owned electricity (PLN) statement of incremental demand for coal amounting to 92 million ton constitutes as a positive sentiment for the domestic coal industry. In 2017, the coal consumption settled at 82.2 million ton.

Range 3780 - 4060

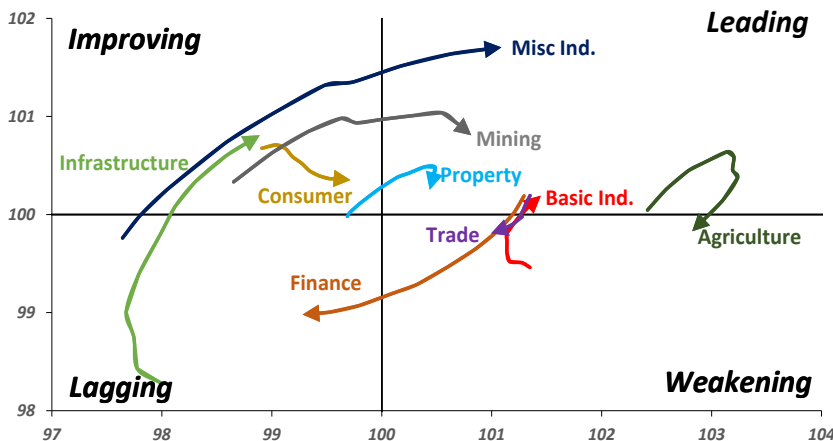
Action Trading buy. Cut Loss If Below 3780



Source: Bloomberg

Sector Rotation

Relative Rotation Graph - Last 10 Days



Source: Bloomberg

Relative Valuation

	Last Price	End of Last Year Price	Target Price*	Rating	Upside Potential (%)	1 Year Change (%)	Market Cap (IDR tn)	Price / EPS (TTM)	Price / BVPS	Return on Equity (%)	Dividend Yield TTM (%)	Sales Growth Yoy (%)	EPS Growth Yoy (%)	Adjusted Beta
JCI Index						12.7	7,104.4							
Finance						29.7	2,124.5							
BBCA	23,325	21,900	24,950	Hold	7.0	32.2	575.1	24.7x	4.4x	19.1	0.9	7.2	13.1	0.9
BBRI	3,650	3,640	4,700	Buy	28.8	42.9	450.2	15.4x	2.7x	18.5	2.9	10.2	10.7	1.3
BMRI	8,050	8,000	10,300	Buy	28.0	37.6	375.7	18.2x	2.3x	13.0	2.5	5.9	49.5	1.3
BBNI	8,575	9,900	10,825	Buy	26.2	34.5	159.9	11.7x	1.6x	14.7	3.0	11.2	19.7	1.3
BBTN	3,660	3,570	3,790	Hold	3.6	57.8	38.8	12.8x	1.8x	14.8	1.6	13.3	15.8	0.9
BJTM	670	710	810	Buy	20.9	(2.2)	10.0	8.6x	1.3x	15.4	6.6	0.6	12.5	1.3
Consumer						9.3	1,498.5							
HMSP	4,150	4,730	5,025	Buy	21.1	6.1	482.7	38.2x	14.2x	37.1	2.6	3.8	(0.9)	1.2
GGRM	77,500	83,800	97,825	Buy	26.2	19.3	149.1	19.2x	3.5x	19.0	3.4	9.2	16.1	1.3
UNVR	51,900	55,900	49,450	Hold	(4.7)	14.1	396.0	56.5x	76.5x	141.8	1.7	2.9	9.5	1.1
ICBP	8,400	8,900	9,625	Hold	14.6	3.7	98.0	25.8x	5.0x	20.5	1.8	3.6	5.5	1.3
INDF	7,225	7,625	8,000	Hold	10.7	(9.4)	63.4	15.2x	2.0x	13.9	3.3	5.3	9.7	1.1
KLBF	1,545	1,690	2,020	Buy	30.7	(3.1)	72.4	30.1x	5.5x	19.1	1.4	4.2	4.5	1.2
KAEF	2,230	2,700	3,280	Buy	47.1	9.3	12.4	37.9x	4.9x	13.8	0.4	5.4	22.2	1.3
Infrastructure						0.4	775.69							
TLKM	3,870	4,440	4,600	Buy	18.9	(6.3)	390.1	17.3x	4.1x	25.0	5.1	10.2	13.9	1.1
EXCL	2,750	2,960	3,800	Buy	38.2	(9.5)	29.4	79.1x	1.4x	1.8	N/A	7.2	(7.9)	0.9
ISAT	4,790	4,800	6,750	Buy	40.9	(32.5)	26.0	22.9x	1.9x	8.3	1.5	2.5	2.8	0.6
JSMR	4,740	6,400	6,050	Buy	27.6	1.3	34.4	15.6x	2.3x	15.3	1.6	110.6	9.5	1.0
TBIG	5,650	6,425	6,050	Hold	7.1	(4.6)	25.6	10.8x	8.1x	99.8	2.6	8.4	229.7	0.7
INDY	3,810	3,060	5,050	Buy	32.5	436.6	19.9	4.3x	1.6x	44.3	N/A	41.7	N/A	1.2
Trade						1.7	769.8							
UNTR	35,575	35,400	42,350	Buy	19.0	22.7	132.7	17.9x	2.9x	17.2	1.9	41.8	48.0	1.3
AKRA	5,825	6,350	8,025	Buy	37.8	(9.0)	23.4	25.8x	3.1x	16.7	2.6	20.2	(11.3)	1.0
SCMA	2,820	2,480	3,250	Buy	15.2	(2.8)	41.2	31.0x	10.6x	36.3	2.1	(1.6)	(11.4)	0.7
MNCN	1,470	1,285	1,500	Hold	2.0	(22.6)	21.0	13.5x	2.1x	16.3	2.9	4.8	10.3	1.0
LPPF	10,975	10,000	13,750	Buy	25.3	(20.9)	32.0	16.8x	13.8x	91.2	4.4	1.3	(5.5)	1.2
ACES	1,390	1,155	1,575	Hold	13.3	53.6	23.8	30.5x	6.8x	23.7	1.2	20.3	9.4	0.9
RALS	1,420	1,200	1,450	Hold	2.1	22.9	10.1	23.5x	2.7x	11.9	2.5	(4.0)	0.8	0.9
MAPI	8,200	6,200	9,450	Buy	15.2	29.1	13.6	40.4x	3.4x	9.5	0.3	15.2	60.3	0.9
Property						1.3	429.2							
BSDE	1,775	1,700	1,850	Hold	4.2	(0.3)	34.2	6.9x	1.3x	21.4	0.3	56.7	172.3	1.2
PWON	630	685	700	Hold	11.1	8.6	30.3	16.2x	2.9x	19.7	0.7	18.1	12.1	1.1
CTRA	1,235	1,185	1,440	Buy	16.6	-	22.9	25.4x	1.7x	6.9	0.4	(4.4)	(12.7)	1.0
SMRA	980	945	1,160	Buy	18.4	(29.2)	14.1	39.0x	2.2x	5.7	0.5	4.5	16.2	1.3
WSKT	2,500	2,210	2,810	Hold	12.4	6.8	33.9	6.0x	2.4x	31.0	1.5	90.1	126.5	1.2
PTPP	2,840	2,640	4,770	Buy	68.0	(16.0)	17.6	12.1x	1.5x	13.8	1.7	30.6	13.6	1.2
WIKA	1,725	1,550	2,150	Buy	24.6	(26.9)	15.5	N/A	1.1x	N/A	2.0	67.1	(17.3)	1.0
ADHI	2,130	1,885	2,160	Hold	1.4	(9.7)	7.6	14.7x	1.3x	9.1	1.2	37.0	64.4	1.0
Misc Ind.						(8.4)	395.7							
ASII	7,950	8,300	9,300	Buy	17.0	(7.3)	321.8	17.0x	2.6x	16.0	2.1	13.8	24.6	1.3
Basic Ind.						27.5	594.3							
INTP	19,850	21,950	21,575	Hold	8.7	20.3	73.1	39.3x	3.0x	7.3	4.7	(6.1)	(51.9)	1.4
SMGR	10,250	9,900	11,550	Hold	12.7	14.2	60.8	30.2x	2.1x	7.0	3.0	6.4	(55.4)	1.3
CPIN	3,760	3,000	4,160	Hold	10.6	17.5	61.7	24.7x	3.9x	16.8	1.5	29.0	10.9	1.2
JPFA	1,610	1,300	1,820	Hold	13.0	(0.6)	18.4	18.4x	2.0x	11.0	3.1	9.4	(53.4)	0.9
MAIN	745	740	780	Hold	4.7	(40.6)	1.7	34.1x	1.0x	2.8	5.1	3.9	(76.8)	1.1
KRAS	480	424	500	Hold	4.2	(20.0)	9.3	N/A	0.4x	(4.4)	N/A	7.8	58.0	1.2
TPIA	6,225	6,000	6,275	Hold	0.8	20.6	111.0	24.4x	4.9x	22.8	2.0	25.3	3.8	0.7
BRPT	2,460	2,260	2,420	Hold	(1.6)	34.8	34.3	24.0x	2.3x	12.4	N/A	25.1	(5.3)	0.2
Mining						23.9	408.2							
ADRO	2,140	1,860	2,720	Buy	27.1	13.2	68.4	10.3x	1.4x	14.6	2.8	29.1	44.5	1.2
PTBA	3,420	2,460	4,085	Buy	19.4	42.8	39.4	8.1x	2.6x	37.3	1.7	38.5	123.2	1.3
ITMG	27,400	20,700	31,125	Hold	13.6	38.0	31.0	8.7x	2.3x	27.1	11.5	23.5	91.7	0.9
INCO	3,120	2,890	3,550	Hold	13.8	38.7	31.0	N/A	1.2x	(0.8)	N/A	7.7	N/A	1.5
ANTM	865	625	990	Hold	14.5	19.3	20.8	152.2x	1.1x	0.7	N/A	39.0	89.3	1.1
TINS	1,130	775	1,240	Hold	9.7	17.1	8.4	16.5x	1.4x	8.6	0.9	32.3	79.9	1.1
ELSA	464	372	625	Buy	34.7	9.4	3.4	15.5x	1.2x	7.8	0.9	37.5	(20.5)	1.1
Agriculture						(8.1)	108.6							
AALI	13,675	13,150	18,375	Buy	34.4	(6.0)	26.3	13.1x	1.5x	11.4	3.8	22.5	(8.0)	0.6
LSIP	1,375	1,420	1,800	Buy	30.9	(2.1)	9.4	12.3x	1.2x	9.7	2.5	23.1	28.7	0.8

* Target Price for December 2018

Source: Bloomberg, NHKS Research

ACST : Distributes Cash Dividend of IDR40.6 Billion

ACST will distribute cash dividend with the ratio of 40% from 2017 net profit. The value is equal to IDR40.6 billion or IDR58 per share. The ratio is higher than 2016 ratio with the dividend of IDR36 per share. The remaining of net profit is allocated to retained earnings. ACST posted the growth of 68.7% y-y in 2017 revenue and the surge of 125.7% y-y in 2017 net profit. (Bisnis Indonesia)

PTBA : Targets Coal Sales Volume of 25.88 Million Ton

PTBA targets 2018 coal sales volume amounting to 25.88 million sold in domestic market by 53% and exported to overseas markets by 47%. The growth in target is underlined by the picking up prices and demand for coal as well as its plan of exporting medium to high calorie coal to premium markets. Furthermore, it will target the hike in coal production into 25.54 million ton (+17% y-y). (Kontan)

PPRE : Secures Contracts of IDR24 Trillion

PPRE secured contracts worth IDR2.4 trillion until 1Q18. One of the contracts is the construction of runway in Soekarno Hatta International Airport. Another to runway project, the bridge construction worth IDR1 trillion, toll road project of IDR700 billion, and runway project of IDR 300 billion are contracts handled by PPRE. Until the end of 2018, it targets the total contracts of IDR7 trillion – IDR8 trillion. (Kontan)

ASGR : Targets Growth of 9% in 1Q18 Revenue

ASGR posted the growth of 9% in 1Q18 revenue into IDR630 billion. The hike was supported by the growth of 10% posted by the document solution segment, the picking up of 20% posted by IT solution segment, and the increase of 37% posted by office solution segment. It is committed to continuously innovating and increasing cost management with a view to hitting the target of growth of 10% in 2018 revenue. (Bisnis Indonesia)

Domestic & Global News

Former General to Take on Widodo in Indonesia Presidential Race

Former general Prabowo Subianto has accepted his party's nomination to challenge incumbent Joko Widodo in next year's presidential election, setting up a rerun of the 2014 race. A national convention of the members from Indonesia's main opposition party, Gerindra, picked Subianto, known as Prabowo, as its presidential candidate on Wednesday. The former special forces commander's endorsement had been widely expected -- hours later Prabowo accepted the endorsement. (Bloomberg)

Trump tweets Russia: 'Get ready' for missiles fired at Syria

President Donald Trump lobbed back at Russia via Twitter Wednesday morning, promising to fire missiles at Syria in response to a recent chemical weapons attack allegedly carried out by the government of Syrian President Bashar Assad. "Get ready Russia, because they will be coming, nice and new and 'smart!,'" Trump said. This latest tweet comes after Trump took aim at Russia's government in a rare rebuke on Sunday, directly criticizing Russian President Vladimir Putin for Moscow's support of Assad and vowing a "big price to pay." (CNBC)

Global Economic Calendar

Date	Country	Hour Jakarta	Event	Period	Actual	Consensus	Previous
Monday 09 - Apr	JPN	06:50	BoP Current Account Balance	Feb	¥2076.0b	¥2196.0b	¥607.4b
Tuesday 10 - Apr	USA	19:30	PPI Final Demand MoM	Mar	0.30%	0.10%	0.20%
	USA	19:30	PPI Ex Food and Energy MoM	Mar	0.30%	0.20%	0.20%
Wednesday 11 - Apr	JPN	06:50	Core Machine Orders MoM	Feb	2.10%	-2.50%	8.20%
	JPN	06:50	PPI YoY	Mar	2.10%	2.00%	2.50%
	CHN	08:30	PPI YoY	Mar	3.10%	3.30%	3.70%
	CHN	08:30	CPI YoY	Mar	2.10%	2.60%	2.90%
	UK	15:30	Industrial Production MoM	Feb	0.10%	0.60%	1.30%
	UK	15:30	Manufacturing Production MoM	Feb	-0.20%	0.20%	0.10%
	USA	19:30	CPI MoM	Mar	-0.10%	0.00%	0.20%
	USA	19:30	CPI Ex Food and Energy MoM	Mar	0.20%	0.20%	0.20%
	USA	19:30	CPI YoY	Mar	2.40%	2.40%	2.20%
	USA	19:30	CPI Ex Food and Energy YoY	Mar	2.10%	2.10%	1.80%
Thursday 12 - Apr	USA	01:00	FOMC Meeting Minutes	21-Mar			
	USA	19:30	Import Price Index MoM	Mar		0.10%	0.40%
	USA	19:30	Initial Jobless Claims	7-Apr		--	242k
Friday 13 - Apr	CHN	Tentative	Trade Balance	Mar		\$27.87b	\$33.74b
	CHN	Tentative	Exports YoY	Mar		11.90%	44.50%
	CHN	Tentative	Imports YoY	Mar		12.40%	6.30%
	GER	13:00	CPI MoM	Mar F		0.40%	0.40%
	GER	13:00	CPI YoY	Mar F		1.60%	1.60%

Source: Bloomberg

Domestic Economic Calendar

Date	Hour Jakarta	Event	Period	Actual	Consensus	Prev.
Monday 09 - Apr	Tentative	Retail Sales YoY	Feb	1.5%	--	-1.8%

Source: Bloomberg

Corporate Calendar

Date	Event	Company
Monday 09 - Apr	Rights Delisting Date	RBMS
	Cum Dividend Date	DSNG (IDR10 per share)
Tuesday 10 - Apr	Rights Delisting Date	BPFI
	Annual Shareholder Meeting	AALI, JSMR
Wednesday 11 - Apr	Annual Shareholder Meeting	ASGR, PTBA
	Annual & Extraordinary Shareholder Meeting	ACST
	Extraordinary Shareholder Meeting	BEKS, BRPT
Thursday 12 - Apr	Annual Shareholder Meeting	ANTM, BOLT, LINK
Friday 13 - Apr	Annual Shareholder Meeting	ADHI, AUTO

Source: Bloomberg

DISCLAIMER

This report and any electronic access hereto are restricted and intended only for the clients and related entities of PT NH Korindo Sekuritas Indonesia. This report is only for information and recipient use. It is not reproduced, copied, or made available for others. Under no circumstances is it considered as a selling offer or solicitation of securities buying. Any recommendation contained herein may not suitable for all investors. Although the information hereof is obtained from reliable sources, its accuracy and completeness cannot be guaranteed. PT NH Korindo Sekuritas Indonesia, its affiliated companies, employees, and agents are held harmless from any responsibility and liability for claims, proceedings, action, losses, expenses, damages, or costs filed against or suffered by any person as a result of acting pursuant to the contents hereof. Neither is PT NH Korindo Sekuritas Indonesia, its affiliated companies, employees, nor agents are liable for errors, omissions, misstatements, negligence, inaccuracy contained herein.

All rights reserved by PT NH Korindo Sekuritas Indonesia



PT. NH Korindo Sekuritas Indonesia

Member of Indonesia Stock Exchange

Head Office :

Wisma Korindo 7th Floor
Jl. M.T. Haryono Kav. 62
Pancoran, Jakarta 12780
Indonesia
Telp: +62 21 7976202
Fax : +62 21 7976206

Branch Office BSD:

ITC BSD Blok R No.48
Jl. Pahlawan Seribu Serpong
Tangerang Selatan 15322
Indonesia
Telp : +62 21 5316 2049
Fax : +62 21 5316 1687

Branch Office Solo :

Jl. Ronggowarsito No. 8
Kota Surakarta
Jawa Tengah 57111
Indonesia
Telp: +62 271 664763
Fax : +62 271 661623

A Member of NH Investment & Securities Global Network

Seoul | New York | Hong Kong | Singapore | Shanghai | Beijing | Hanoi |
Jakarta